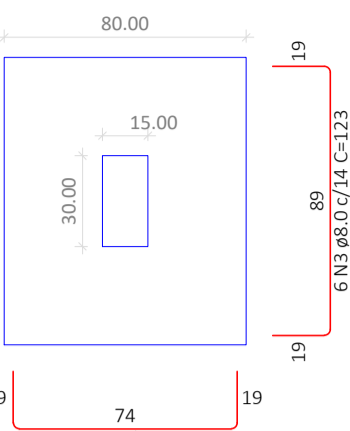


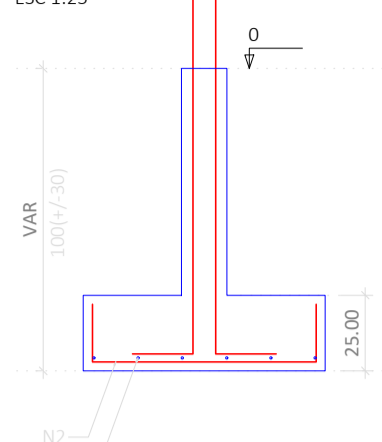
S11=S13=S16=S20=S21=S34=S35=S38=S39=S46
=S47=S48

PLANTA
ESC 1:25



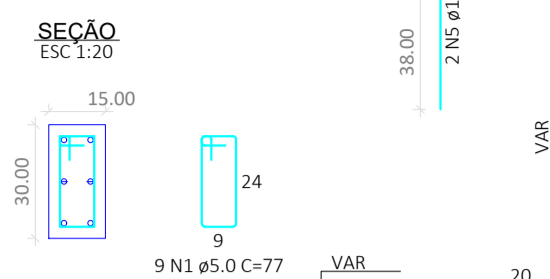
Solo compactado sobre a sapata
peso específico > 1600.00 kgf/m³

CORTE
ESC 1:25



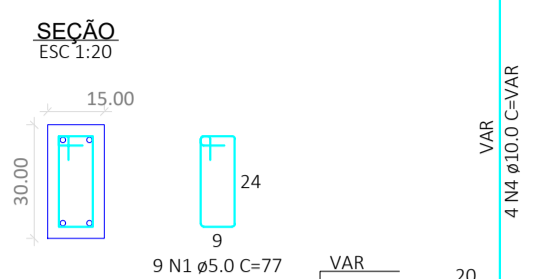
P13=P20=P21

BALDRAME - L1
ESC 1:20



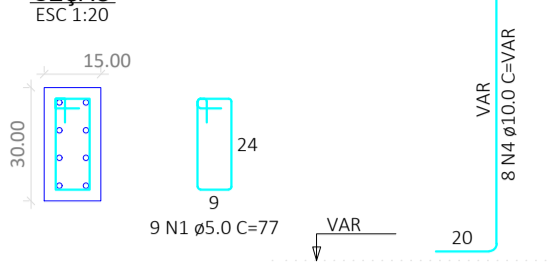
P11=P34=P35

BALDRAME - L1
ESC 1:25



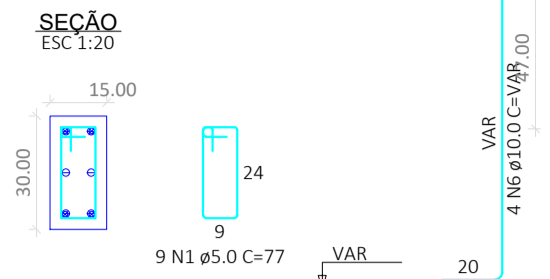
P16

BALDRAME - L1
ESC 1:25



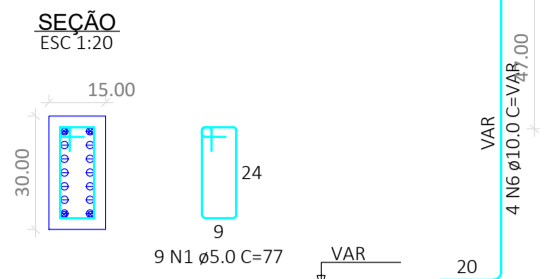
P38=P47

BALDRAME - L1
ESC 1:20



P39

BALDRAME - L1
ESC 1:20



RELAÇÃO DO AÇO

	N	DIAM (mm)	QUANT	C.UNIT (cm)	C.TOTAL (cm)
3xP11	1	5.0	108	77	8316
2xP38	2	8.0	84	108	9072
P48	3	8.0	72	123	8856
	4	10.0	40	VAR	1350
	5	10.0	18	75	VAR
	6	10.0	12	12	VAR
	7	12.5	26	94	2444

RESUMO DO AÇO

AÇO	DIAM (mm)	C.TOTAL (m)	PESO + 0% (kg)
CASO	8.0	88.1	70.7
CASO	10.0	12.5	54.3
CASO	5.0	83.2	23.5

PESO TOTAL (kg)

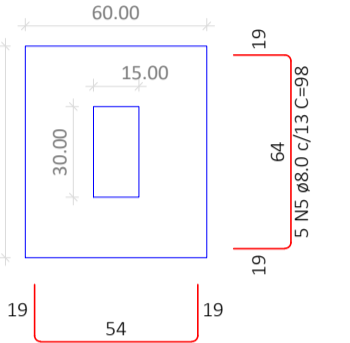
CASO 148.6
CASO 12.8

Volume de concreto (C-25) = 2.82 m³

Área de forma = 21.30 m²

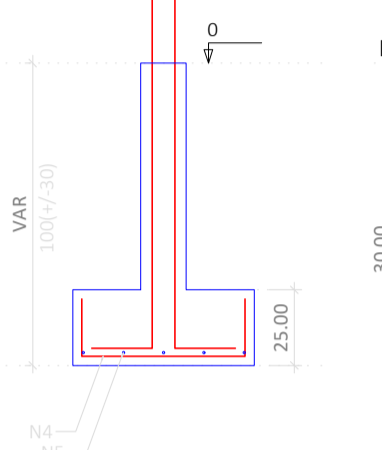
S1=S18

PLANTA
ESC 1:25



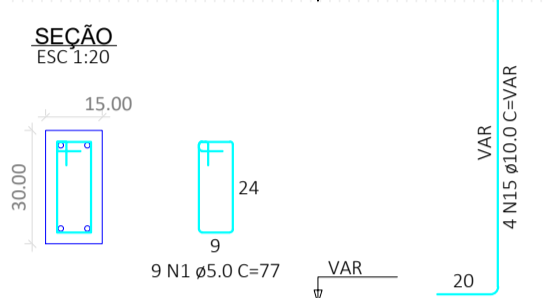
Solo compactado sobre a sapata
peso específico > 1600.00 kgf/m³

CORTE
ESC 1:25



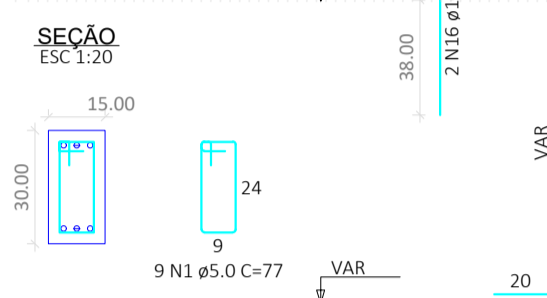
P1

BALDRAME - L1
ESC 1:20



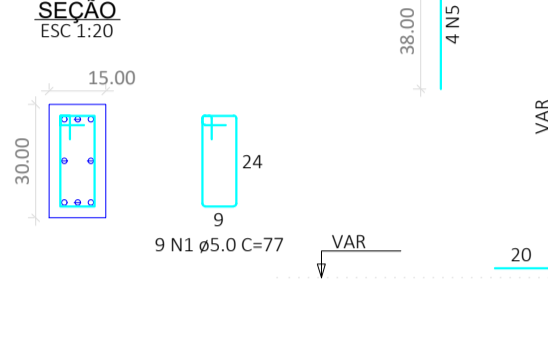
P18

BALDRAME - L1
ESC 1:25



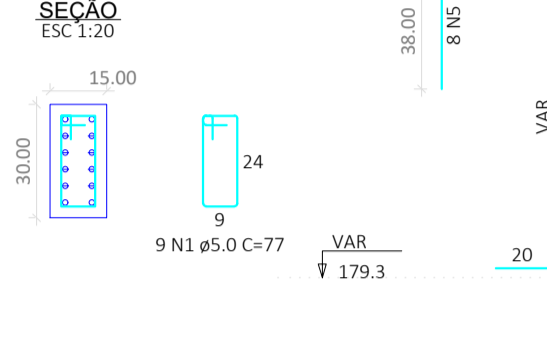
P46

BALDRAME - L1
ESC 1:20



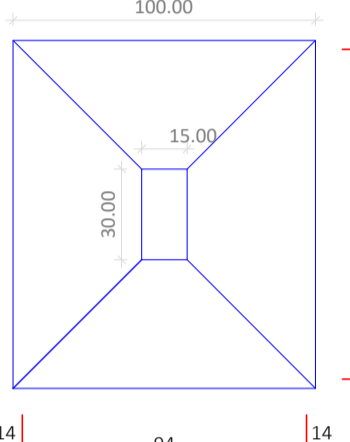
P48

BALDRAME - L1
ESC 1:20



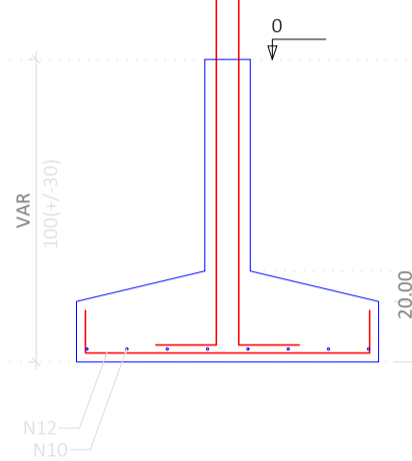
S17=S41

PLANTA
ESC 1:25



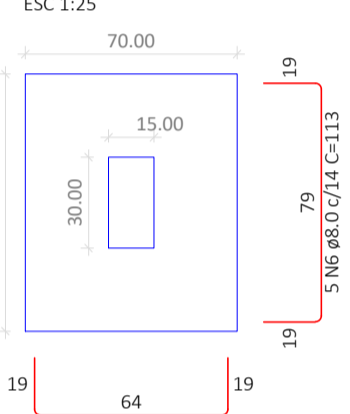
Solo compactado sobre a sapata
peso específico > 1600.00 kgf/m³

CORTE
ESC 1:25



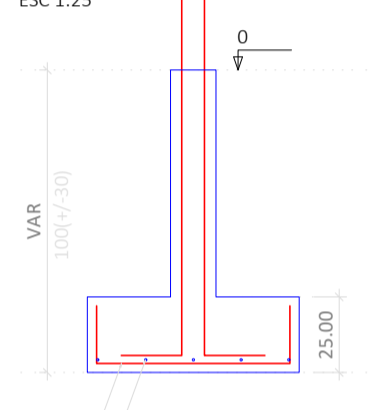
S2=S6=S8=S10=S14=S19=S22=S23=S24=S25
=S28=S29=S50

PLANTA
ESC 1:25



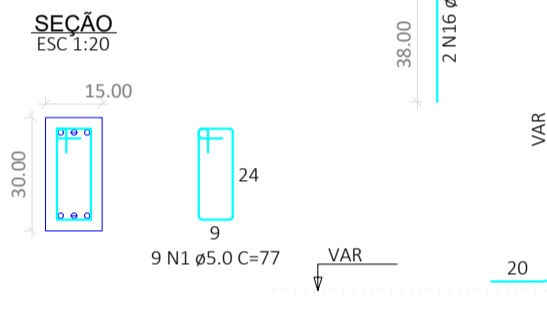
Solo compactado sobre a sapata
peso específico > 1600.00 kgf/m³

CORTE
ESC 1:25



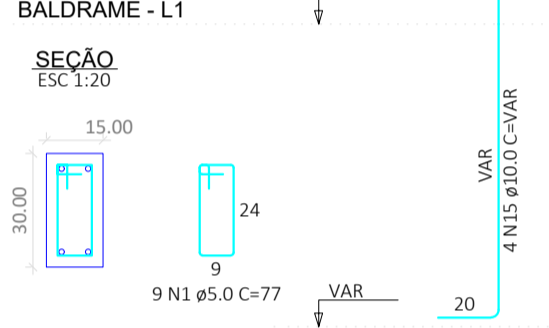
P6=P14=P22

BALDRAME - L1
ESC 1:20



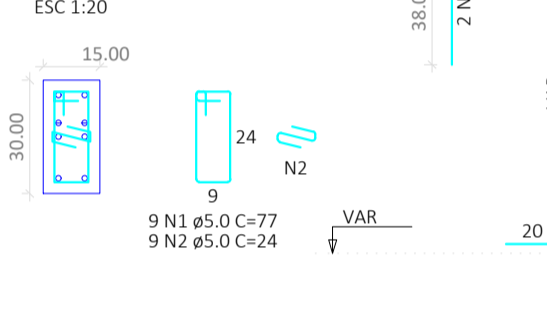
P2=P10=P19=P23=P24=P28=
=P29=P50

BALDRAME - L1
ESC 1:25



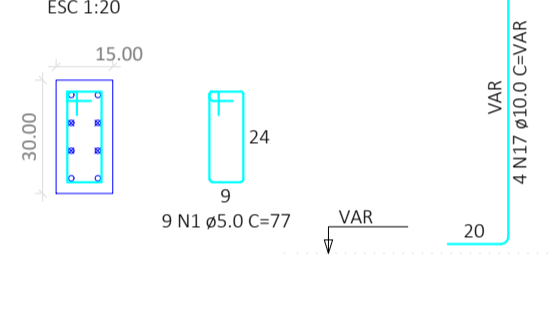
P25

BALDRAME - L1
ESC 1:20



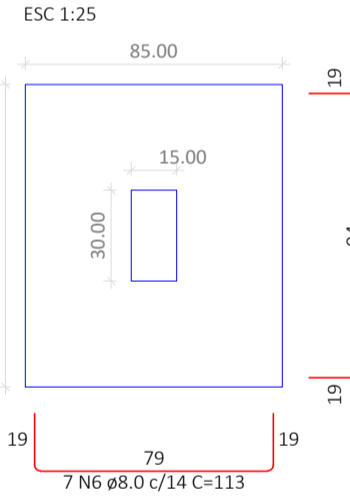
P8

BALDRAME - L1
ESC 1:25



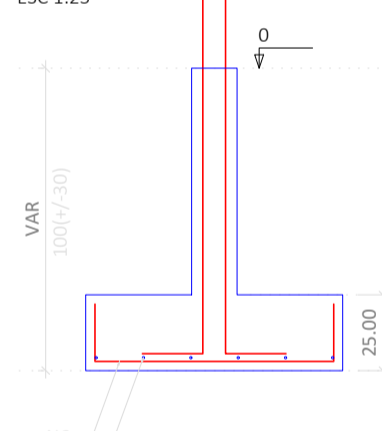
S3=S4=S5=S7=S9=S15=S30=S31=S32=S33=S40
=S44=S45=S49

PLANTA
ESC 1:25



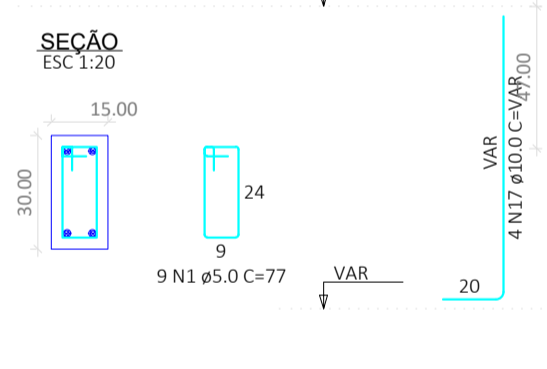
Solo compactado sobre a sapata
peso específico > 1600.00 kgf/m³

CORTE
ESC 1:25



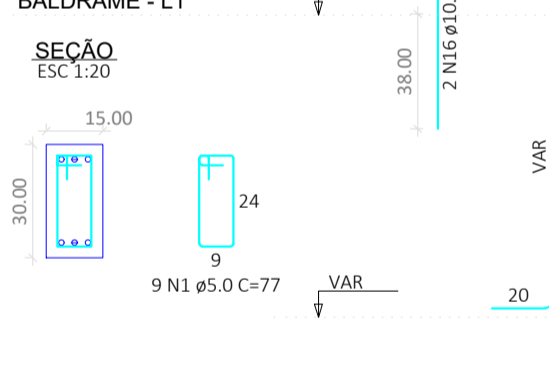
P15

BALDRAME - L1
ESC 1:20



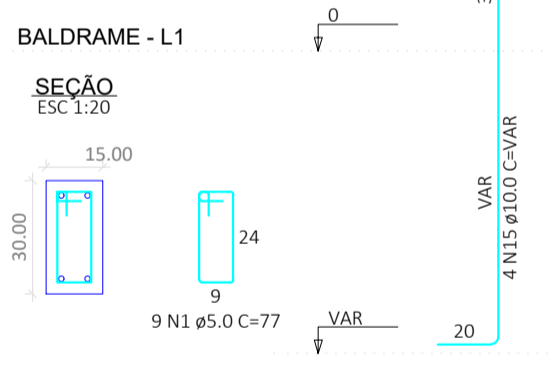
P30=P31=P45

BALDRAME - L1
ESC 1:25



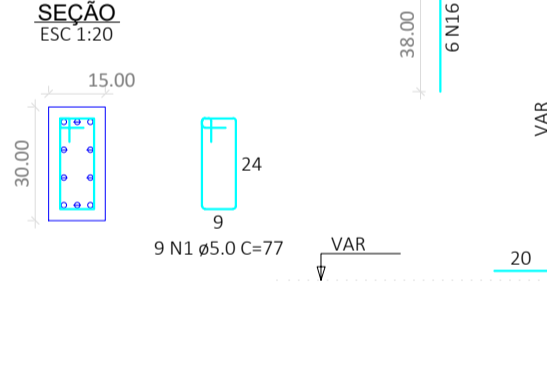
P3=P4=P5=P7=P9=P32=P33=
=P44

BALDRAME - L1
ESC 1:20



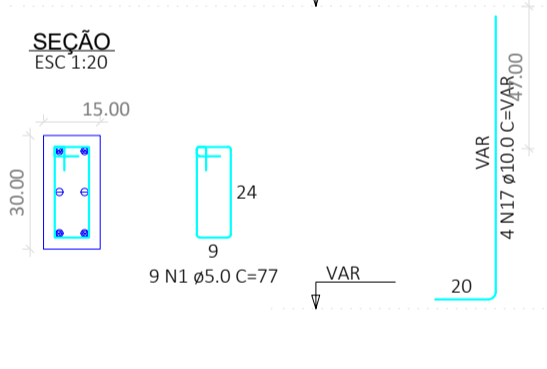
P40

BALDRAME - L1
ESC 1:20



P49

BALDRAME - L1
ESC 1:25



RELAÇÃO DO AÇO

	N	DIAM (mm)	QUANT	C.UNIT (cm)	C.TOTAL (cm)
P1	1	5.0	333	77	25641
3xP6	2	5.0	18	24	432
P8	3	8.0	10	87	780
P15	4	8.0	10	88	880
P25	5	8.0	88	98	8624
3xP30	6	8.0	163	113	18419
P36	7	8.0	32	123	3936
P49	8	8.0	28	133	3724
4xS27	9	8.0	84	128	10752
2xS41	10	8.0	27	133	3591
	11	8.0	10	148	1480
	12	8.0	18	118	2124
	13	8.0	12	93	1116
	14	8.0	10	108	1080
	15	10.0	134	VAR	VAR
	16	10.0	36	75	2700
	17	10.0	26	VAR	VAR
	18	12.5	34	94	3196

RESUMO DO AÇO

AÇO	DIAM (mm)	C.TOTAL (m)	PESO + 0% (kg)
CASO	8.0	557.3	219.9
CASO	10.0	261.1	161
CASO	12.5	52	30.8

PESO TOTAL (kg)

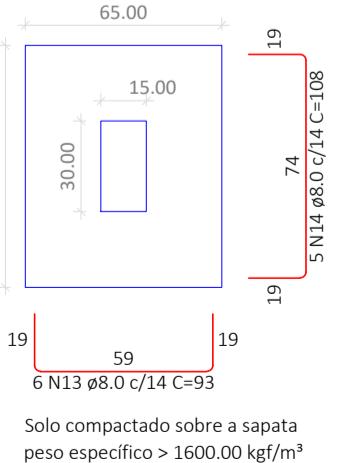
CASO 411.7
CASO 41.4

Volume de concreto (C-25) = 9.05 m³

Área de forma = 66.78 m²

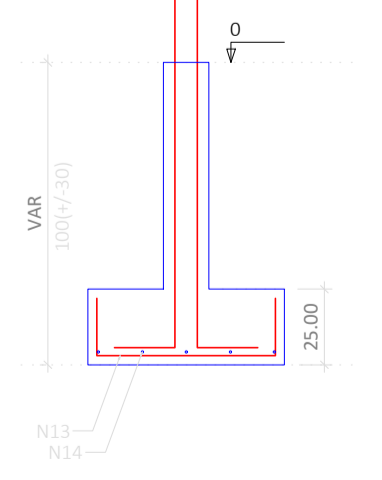
S26=S43

PLANTA
ESC 1:25



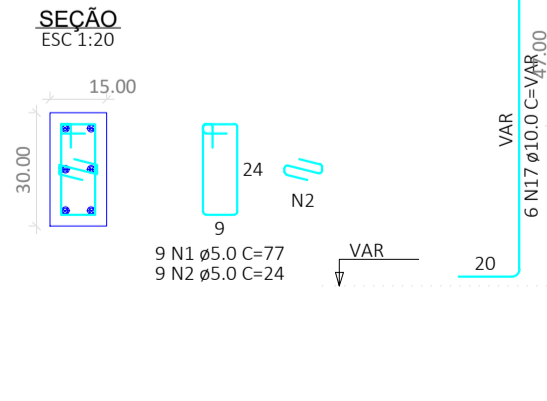
Solo compactado sobre a sapata
peso específico > 1600.00 kgf/m³

CORTE
ESC 1:25



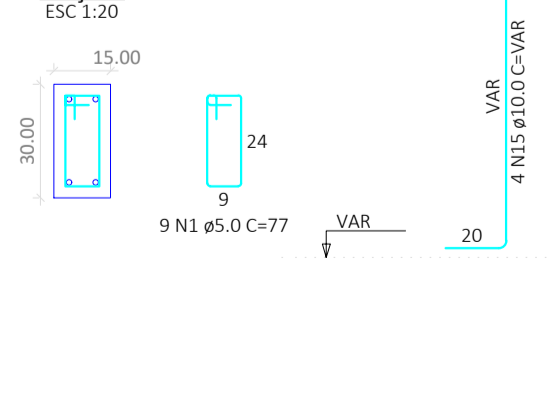
P26

BALDRAME - L1
ESC 1:20



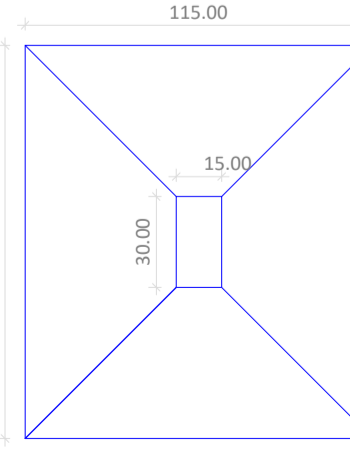
P43

BALDRAME - L1
ESC 1:25



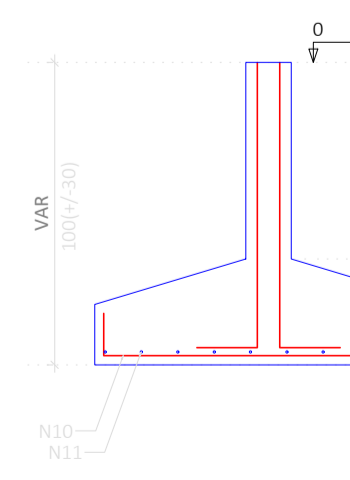
S36

PLANTA
ESC 1:25



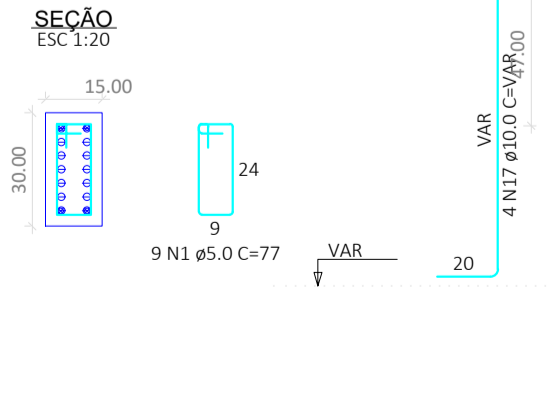
Solo compactado sobre a sapata
peso específico > 1600.00 kgf/m³

CORTE
ESC 1:25



P36

BALDRAME - L1
ESC 1:20



CONVÊNIO :

PROJETO ESTRUTURA DE CONCRETO

OBRA :

UNIDADE BÁSICA DE SAÚDE - PORTE I

ENDEREÇO DA OBRA :

PROJETO DE ASSENTAMENTO PROVIDÊNCIA, S/N , ZONA RURAL, BERNARDO SAYÃO - TO

PROPRIETÁRIO :

FUNDO MUNICIPAL DE SAÚDE DE BERNARDO SAYÃO
CNPJ: 11.408.686/0001-70

AUTOR DO PROJETO :

LEONARDO SOUSA AMORIM
ENG. CIVIL CREA 307258/D-TO

ESCALA

INDICADA

DATA

SETEMBRO / 2024

RESP. DESENHO

LEONARDO

(63) 99278-6334

CONTEÚDO :

DETALHE DA FUNDAÇÃO

QUADRO DE ÁREAS :

ÁREA :

VER PROJETO ARQUITETÔNICO

LSA
ENGENHARIA

Rua Raul do Espírito Santo, Nº 1373 - CEP: 77760-00
CNPJ: 28.768.127/0001-93
Cidade do Tocantins - TO
(63) 99278-6334
e-mail: lsaengenharia@outlook.com

FOLHA : A1

02 / 12