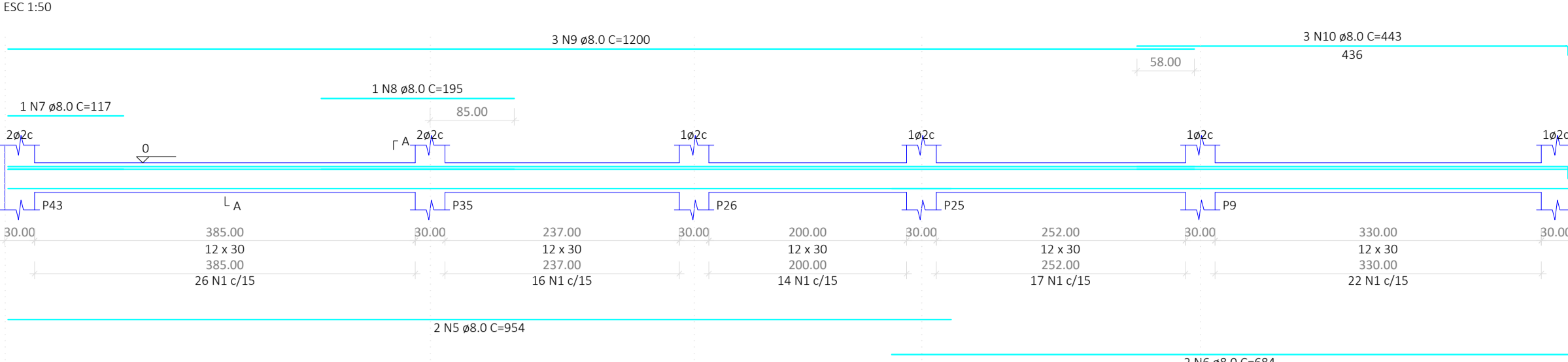
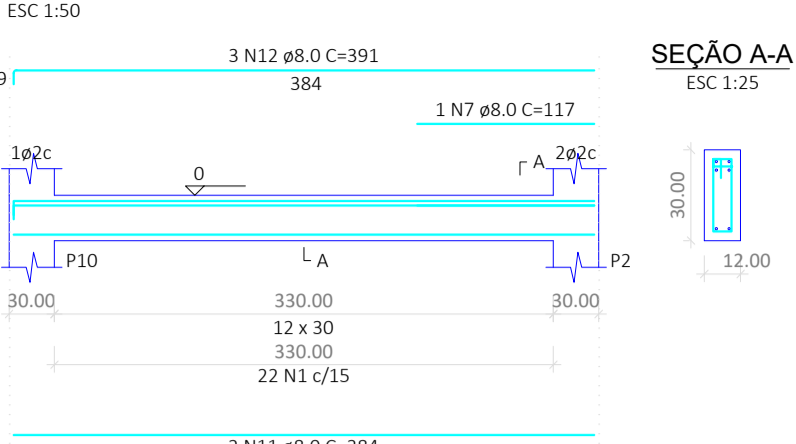


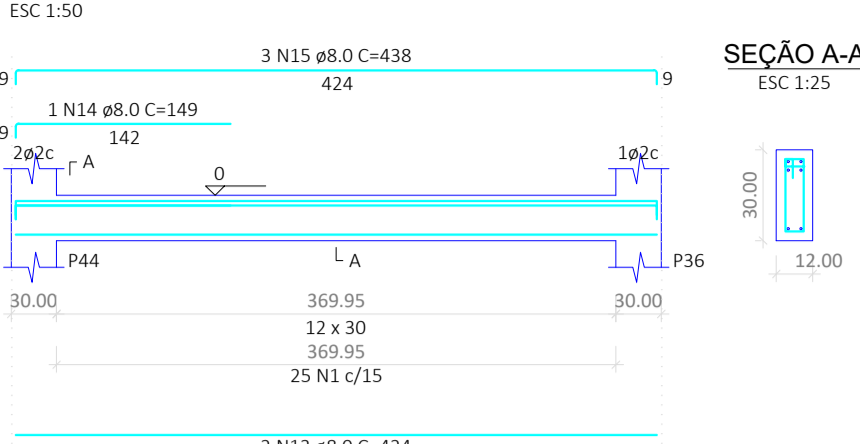
VB14



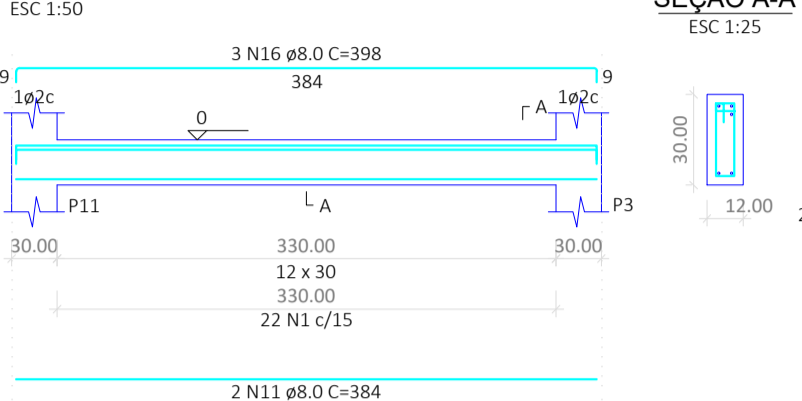
VB15



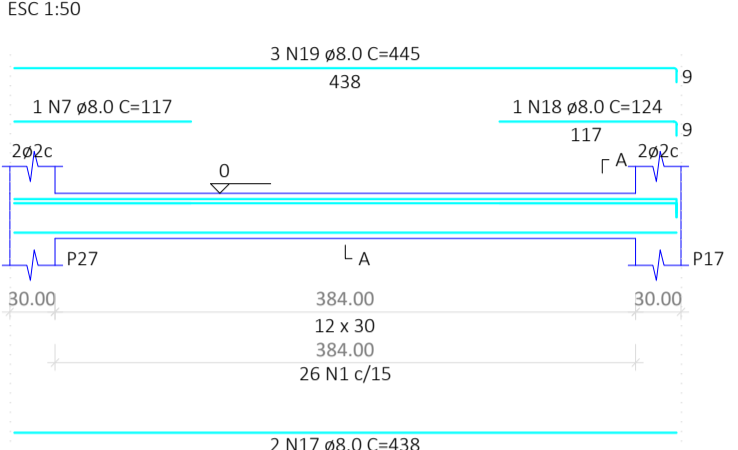
VB16



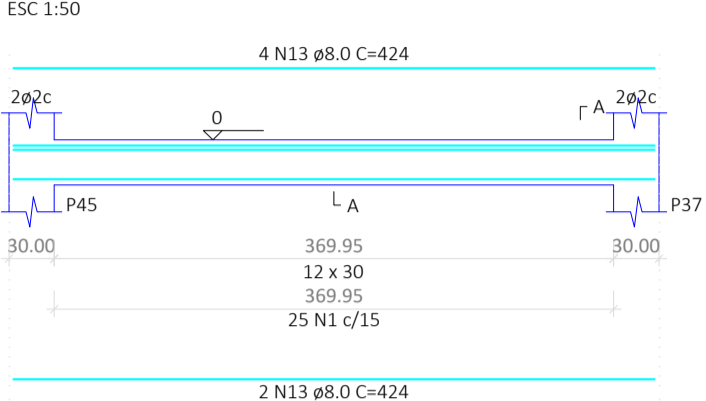
VB17



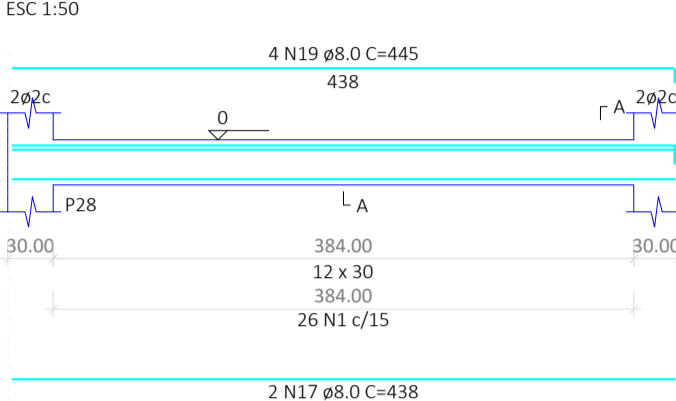
VB18



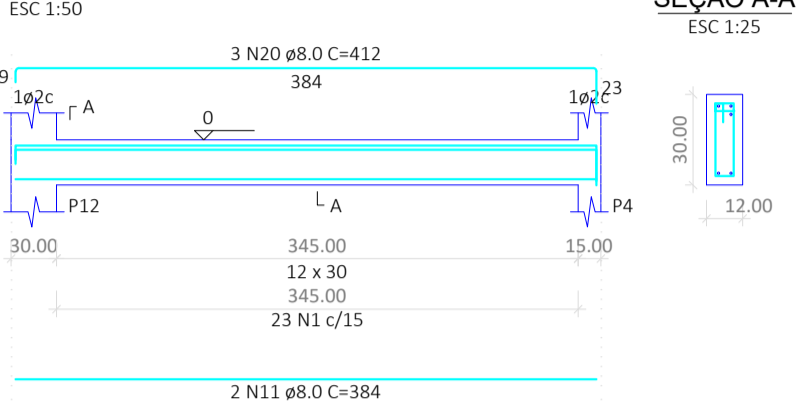
VB19



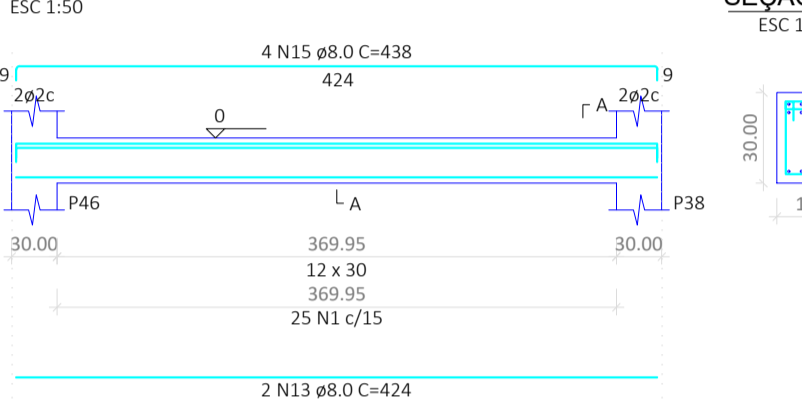
VB20



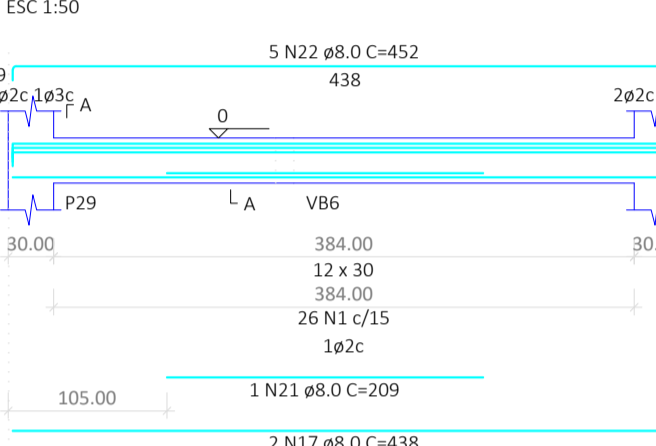
VB21



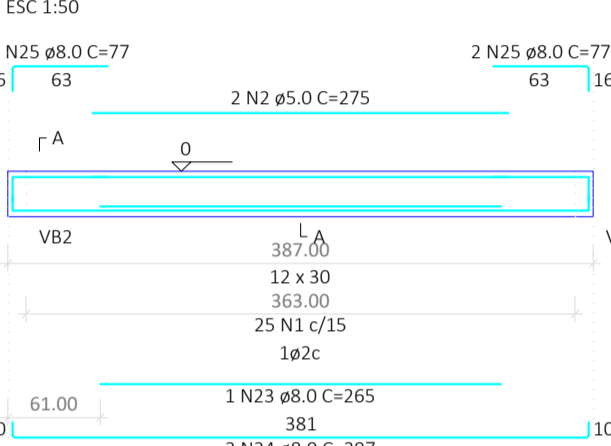
VB22



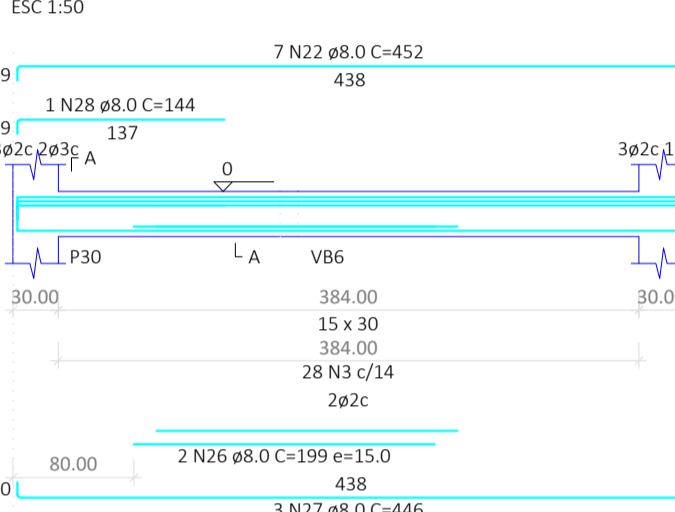
VB23



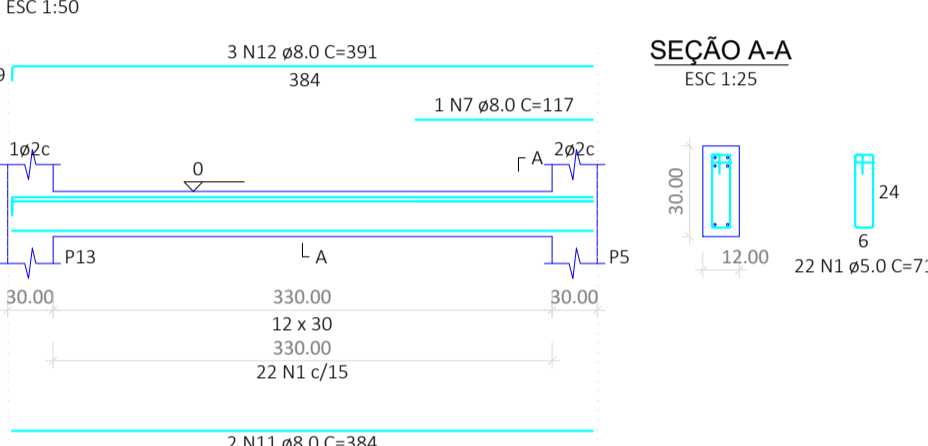
VB24



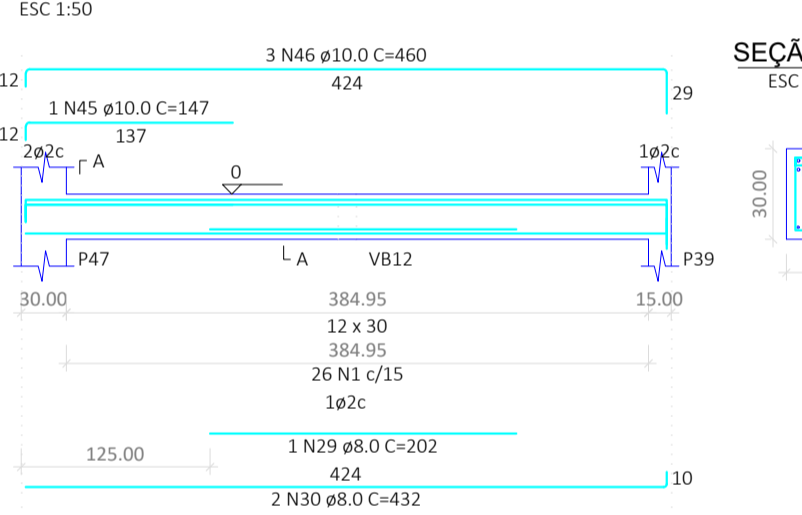
VB25



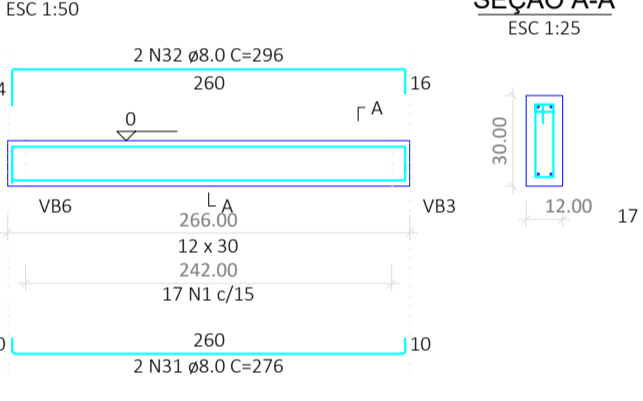
VB26



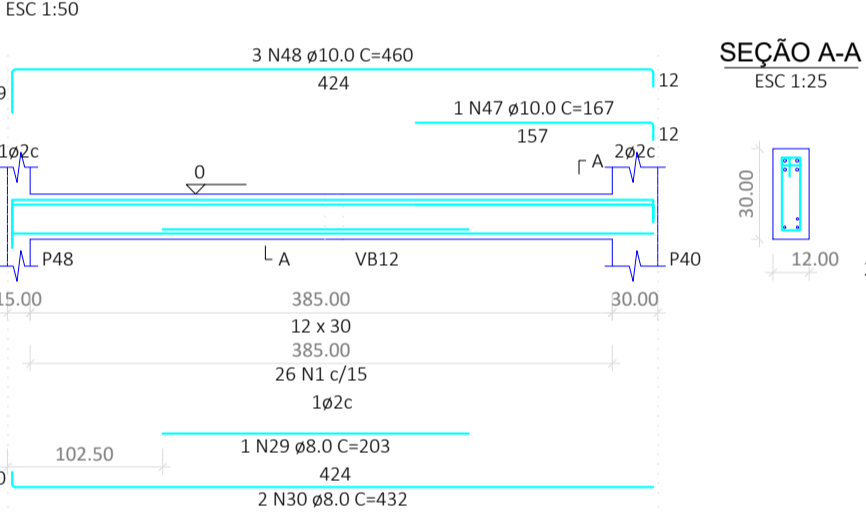
VB27



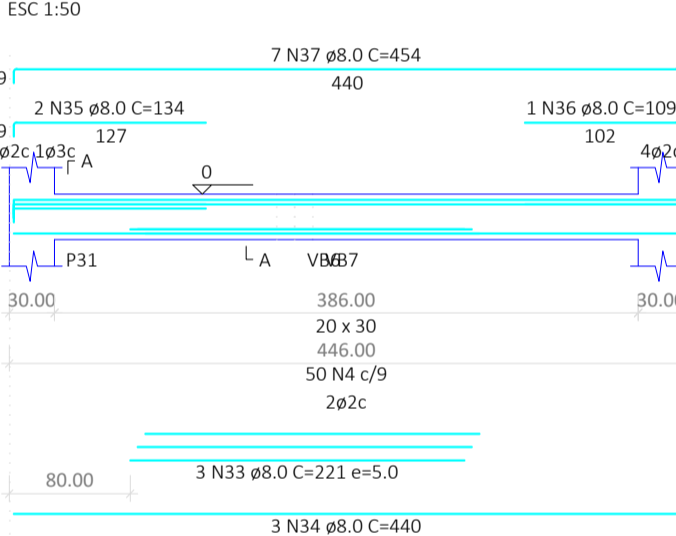
VB28



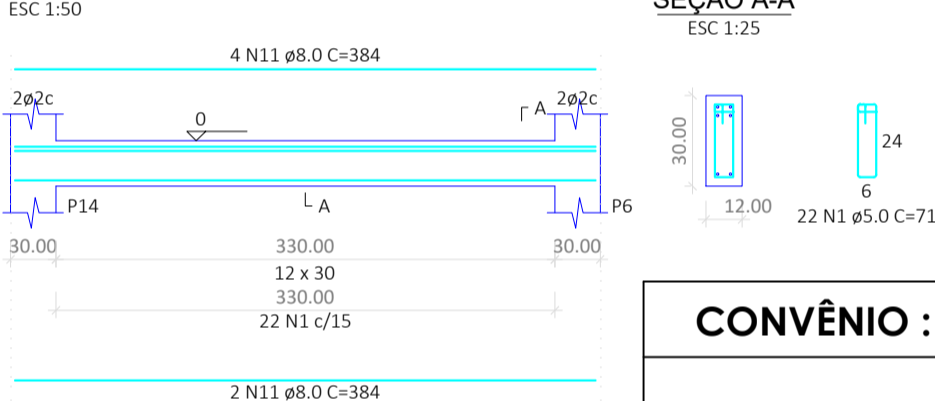
VB29



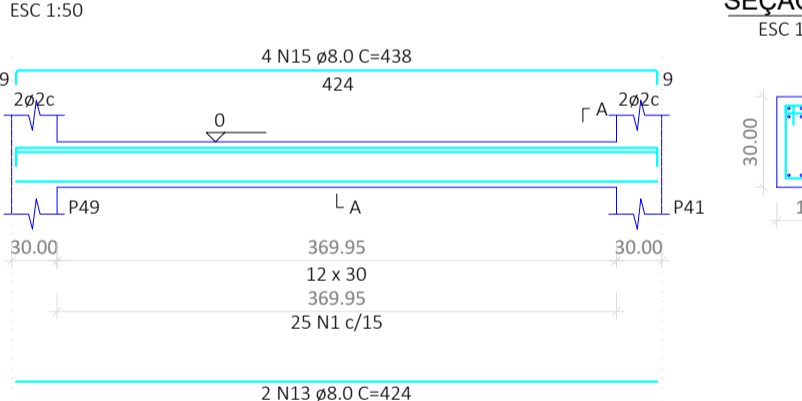
VB30



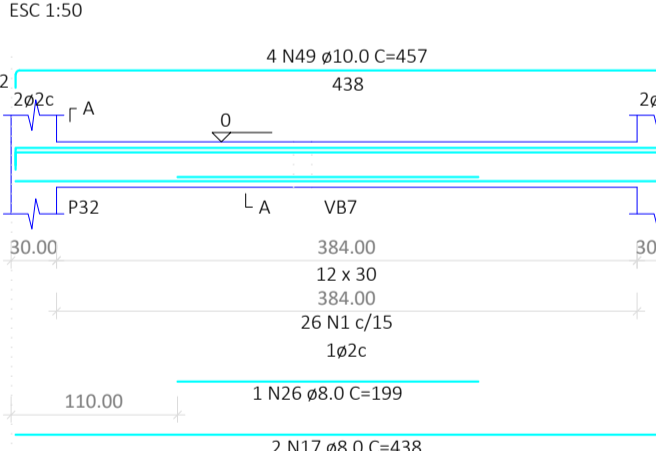
VB31



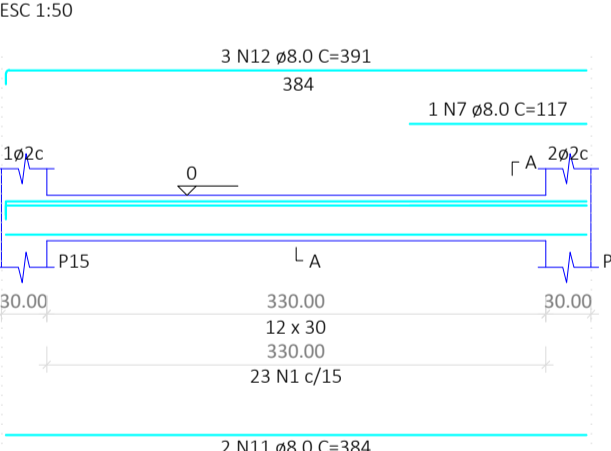
VB32



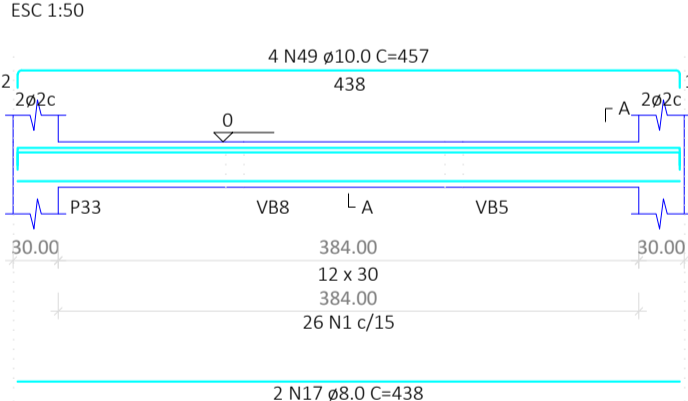
VB33



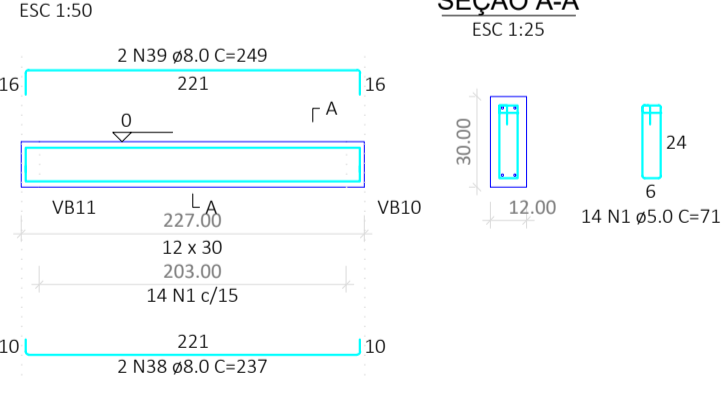
VB34



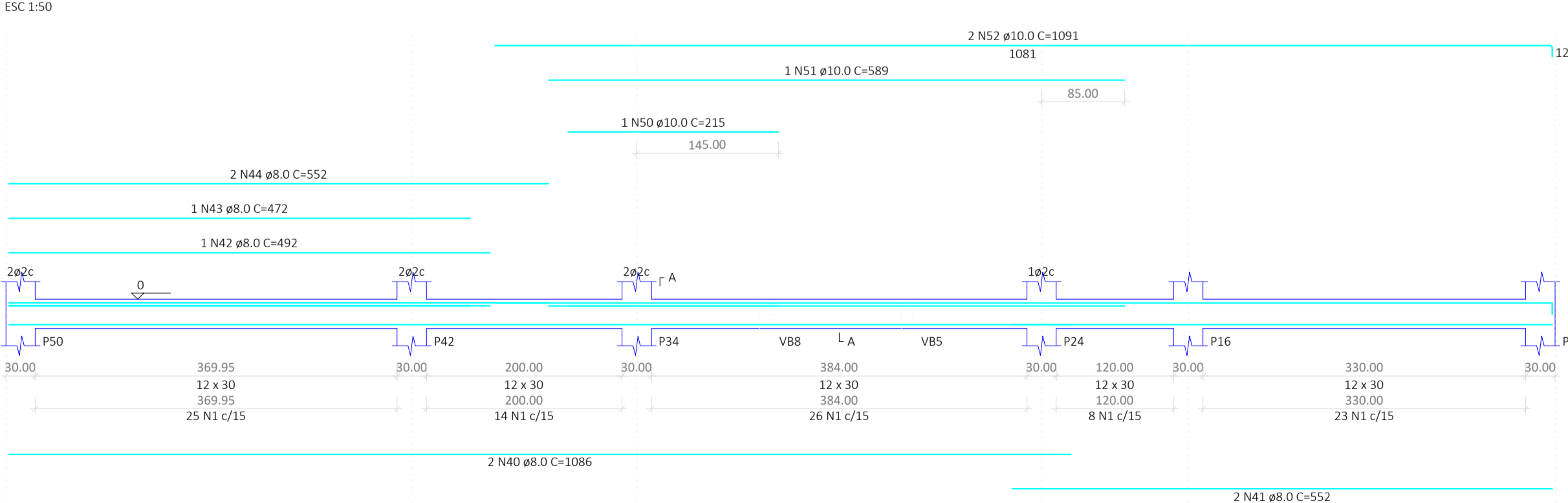
VB35



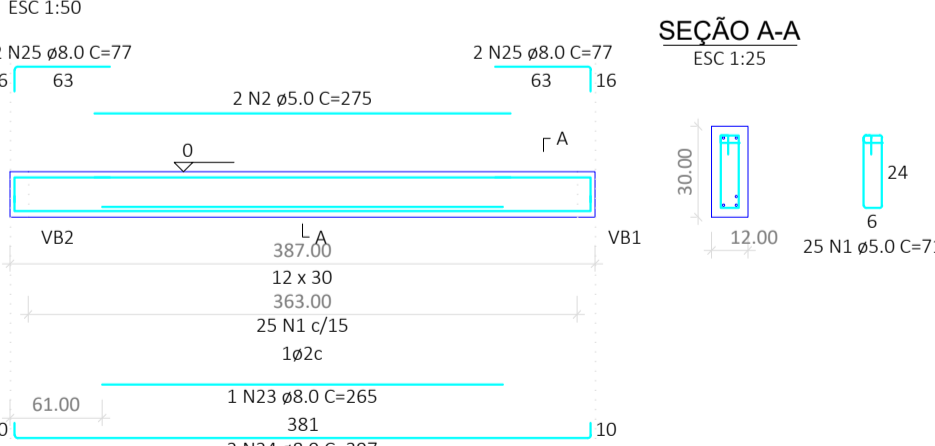
VB37



VB38



VB36



RELAÇÃO DO AÇO

AÇO	N	DIAM (mm)	QUANT	CUNIT (cm)	C-TOTAL (cm)
CA60	1	5.0	688	71	48848
	2	5.0	4	275	1100
	3	5.0	28	77	2156
	4	5.0	60	87	4350
	5	8.0	2	954	1908
	6	8.0	2	684	1368
	7	8.0	5	117	585
	8	8.0	1	195	195
	9	8.0	3	1200	3600
	10	8.0	3	443	1329
	11	8.0	16	384	6144
	12	8.0	9	391	3519
	13	8.0	12	424	5088
	14	8.0	1	149	149
	15	8.0	11	438	4818
	16	8.0	3	398	1194
	17	8.0	10	438	4380
	18	8.0	1	124	124
	19	8.0	7	445	3115
	20	8.0	3	412	1236
	21	8.0	1	209	209
	22	8.0	12	452	5424
	23	8.0	2	265	530
	24	8.0	4	397	1588
	25	8.0	8	77	616
	26	8.0	3	199	597
	27	8.0	3	446	1338
	28	8.0	1	144	144
	29	8.0	2	202	404
	30	8.0	4	432	1728
	31	8.0	2	276	552
	32	8.0	2	296	592
	33	8.0	3	221	663
	34	8.0	3	440	1320
	35	8.0	2	134	268
	36	8.0	1	109	109
	37	8.0	7	454	3178
	38	8.0	2	237	474
	39	8.0	2	249	498
	40	8.0	2	1086	2172
	41	8.0	2	552	1104
	42	8.0	1	492	492
	43	8.0	1	472	472
	44	8.0	2	552	1104
	45	10.0	1	147	147
	46	10.0	3	460	1380
	47	10.0	1	167	167
	48	10.0	3	460	1380
	49	10.0	8	457	3656
	50	10.0	1	215	215
	51	10.0	1	589	589
	52	10.0	2	1091	2182

AÇO	DIAM (mm)	C-TOTAL (m)	PESO + 0% (kg)
CA50	8.0	643.3	253.8
CA60	10.0	97.2	59.9
CA60	5.0	564.5	87
PESO TOTAL (kg)		313.7	87

Volume de concreto (C-25) = 4.63 m³
Área de forma = 90.24 m²

CONVÊNIO :

OBRA :
UNIDADE BÁSICA DE SAÚDE – PORTE I

ENDEREÇO DA OBRA :
PROJETO DE ASSENTAMENTO PROVIDÊNCIA, S/N , ZONA RURAL, BERNARDO SAYÃO – TO

PROPRIETÁRIO :
FUNDO MUNICIPAL DE SAÚDE DE BERNARDO SAYÃO
CNPJ: 11.408.686/0001-70

AUTOR DO PROJETO :
LEONARDO SOUSA AMORIM
ENG. CIVIL CREA 307258/D-TO

ESCALA INDICADA: DATA: SETEMBRO / 2024RESP. DESENHO: LEONARDO (63) 99278-6334

CONTEÚDO :
DETALHE VIGAS BALDRAME – VB14 A VB 38

QUADRO DE ÁREAS :

ÁREA :
VER PROJETO ARQUITETÔNICO

LSA
ENGENHARIA

Rua Raul do Espírito Santo, Nº 1373 - CEP: 77640-00
CNPJ: 28.748.127/0001-93
Cidade do Tocantins - TO
(63) 99278-6334
e-mail: lsaengenharia@outlook.com

FOLHA : A1

05 / 12