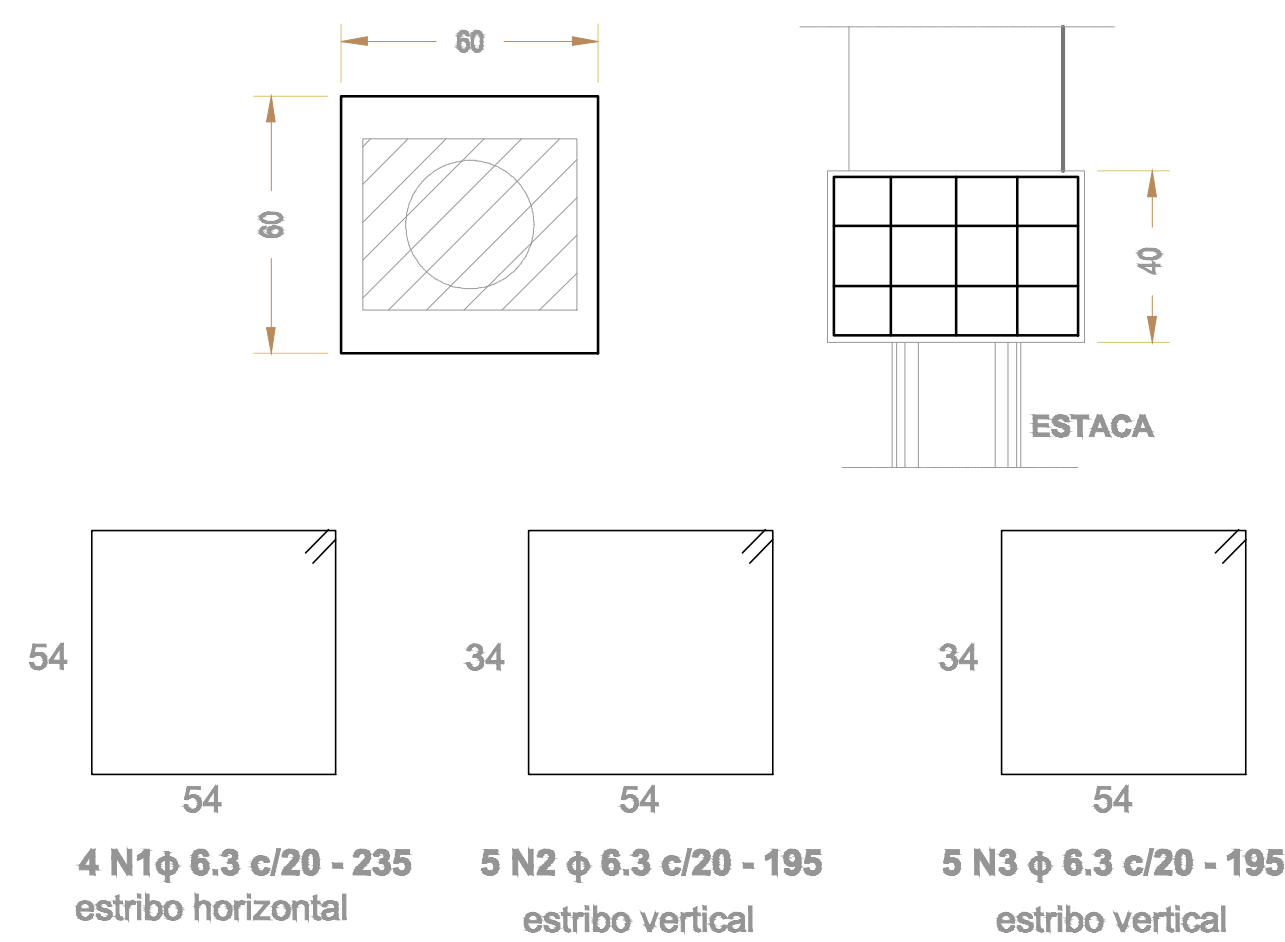


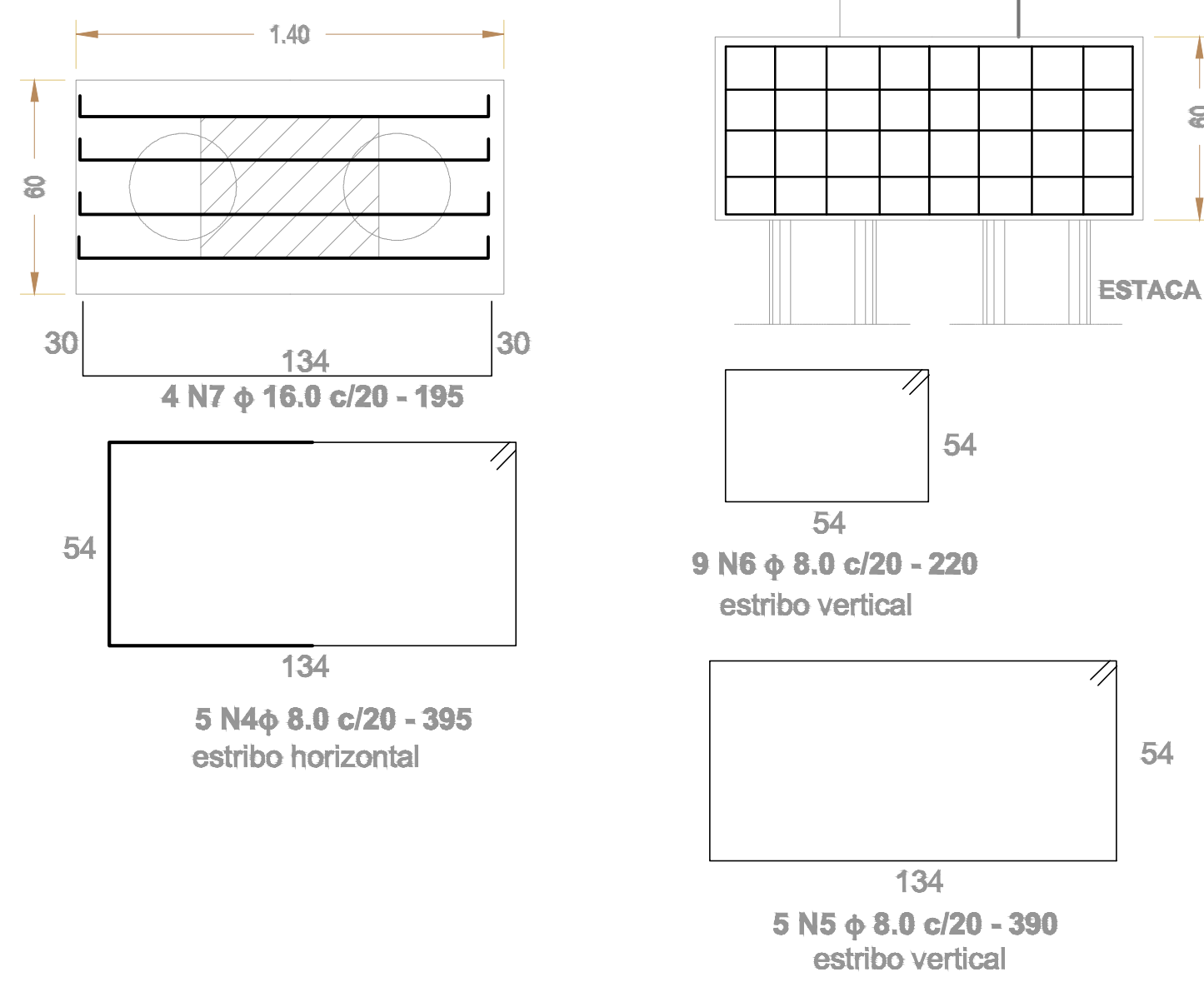
BLOCO SOBRE 1 ESTACA
B1=B2=B7=B8 (4x)

escala.....1:25



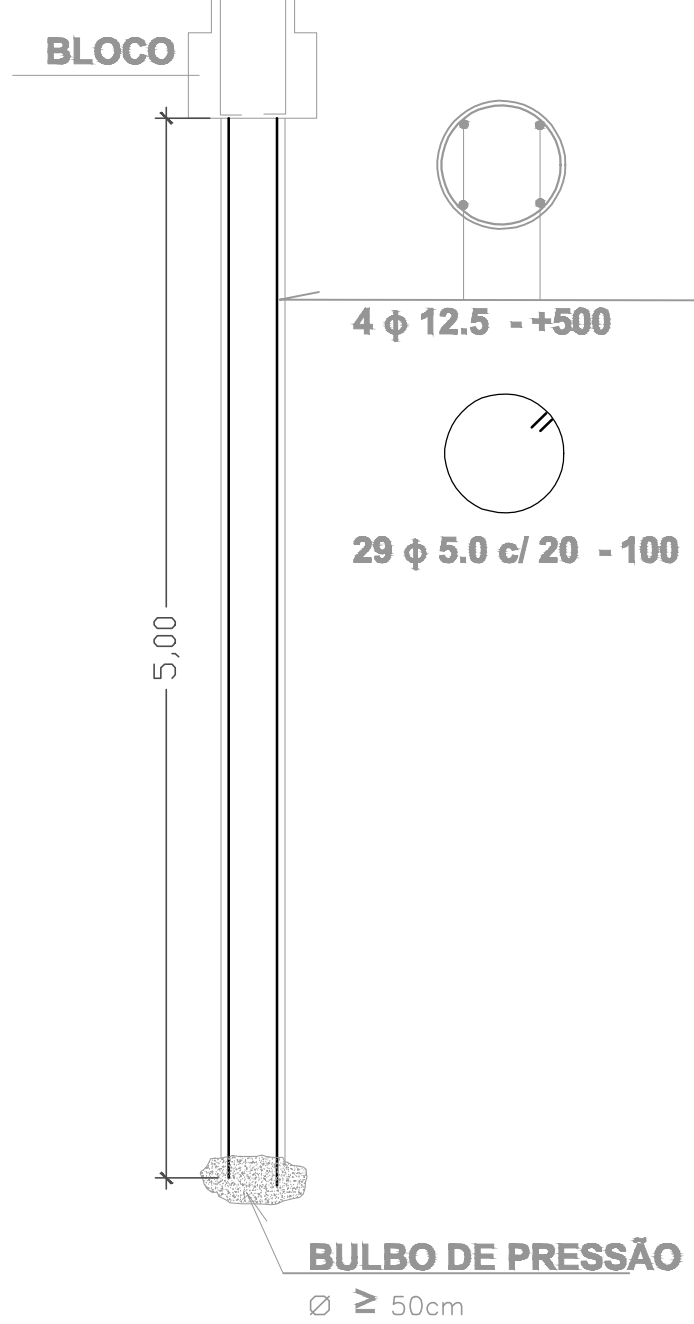
BLOCO SOBRE 2 ESTACA
B3=B4=B5=B6 (x4)

escala.....1:25



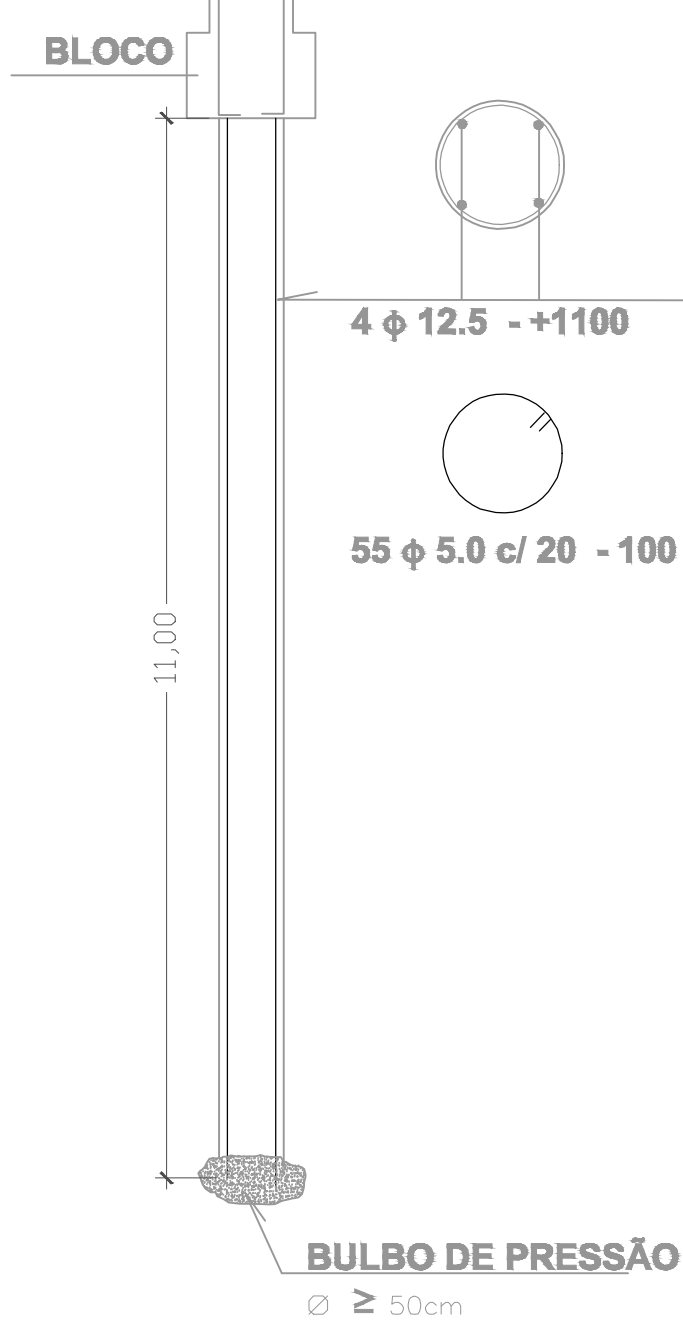
ESTACA RAIZ
B1=B2=B7=B8
 ϕ 31cm (4x)

escala.....1:50 e 1/25

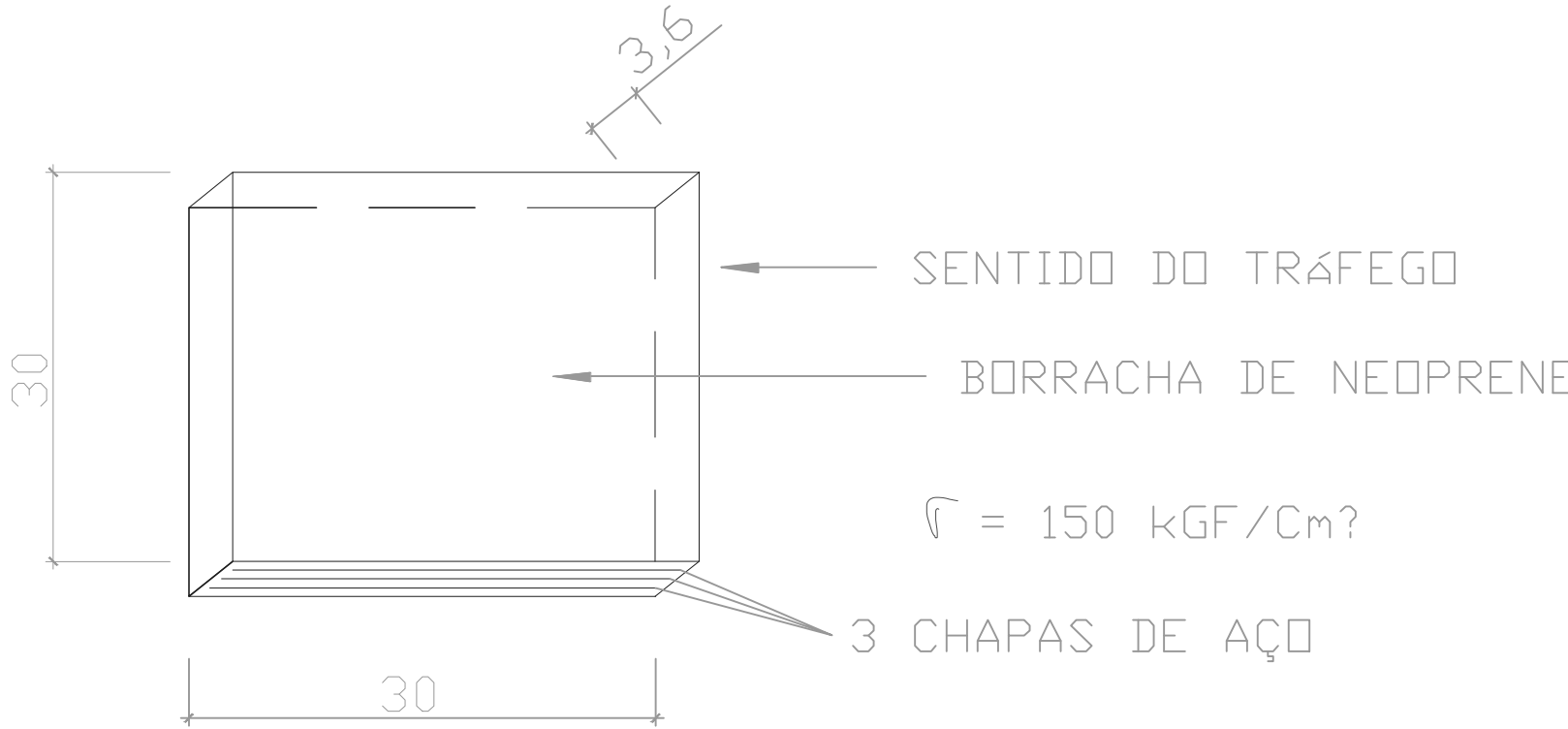


ESTACA RAIZ
B3=B4=B5=B6
 ϕ 31cm (8x)

escala.....1:50 e 1/25

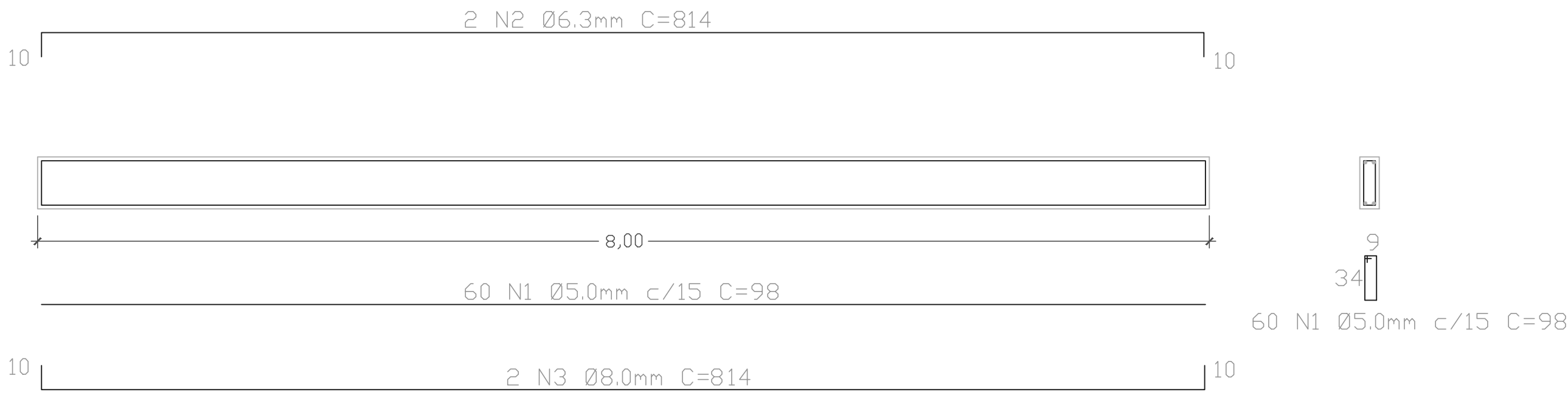


APARELHOS DE APOIO
NEOPRENE (FRETADO)

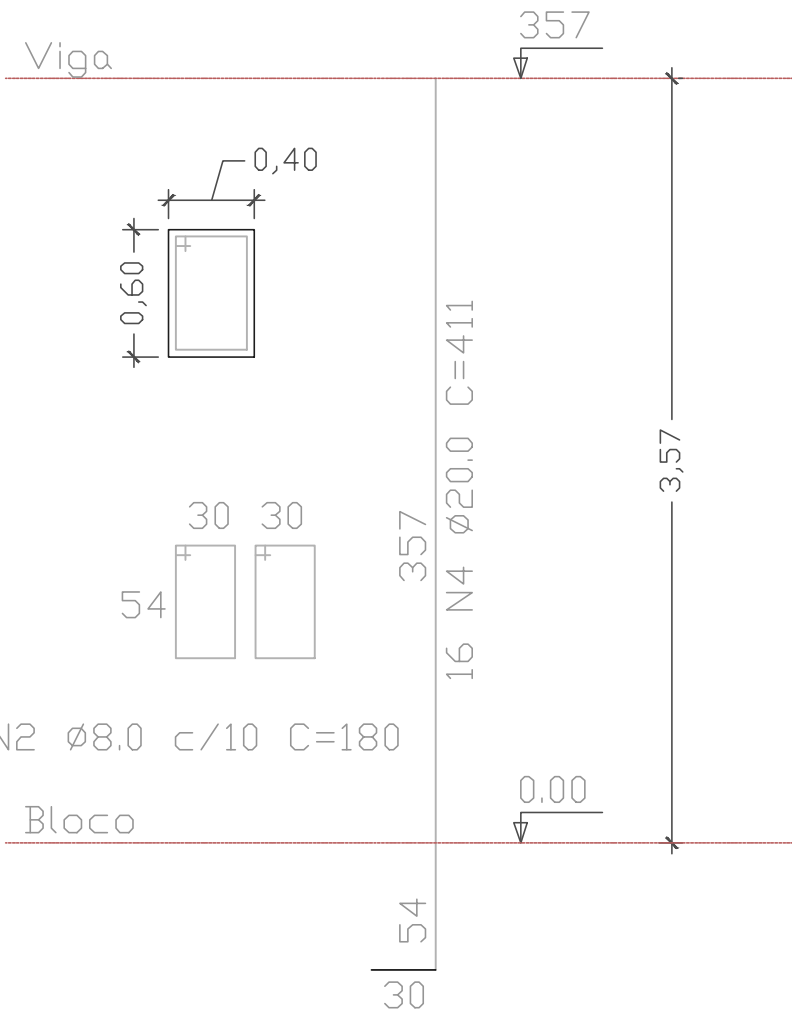


Viga Guarda Roda 15x40cm (x2)

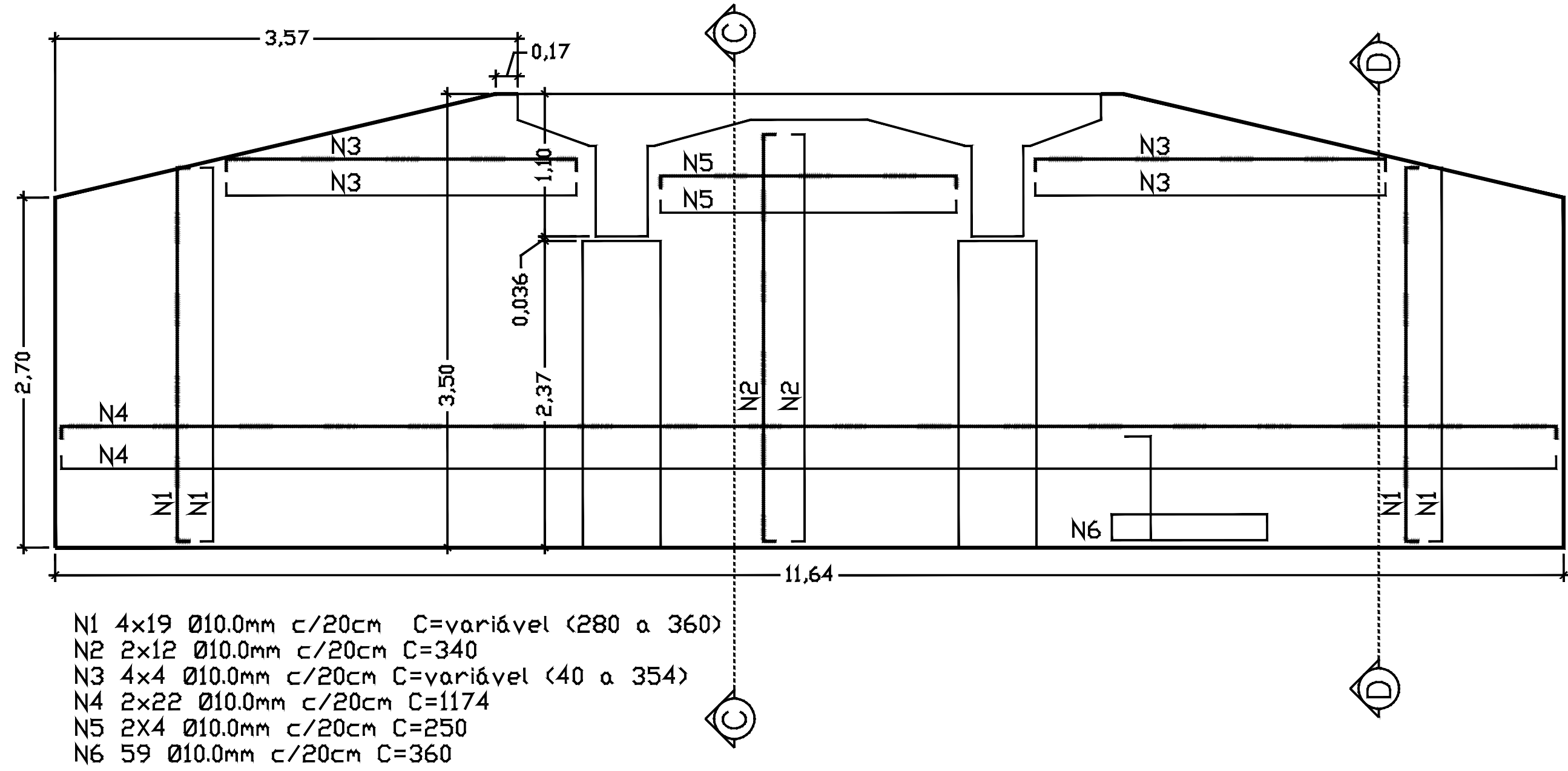
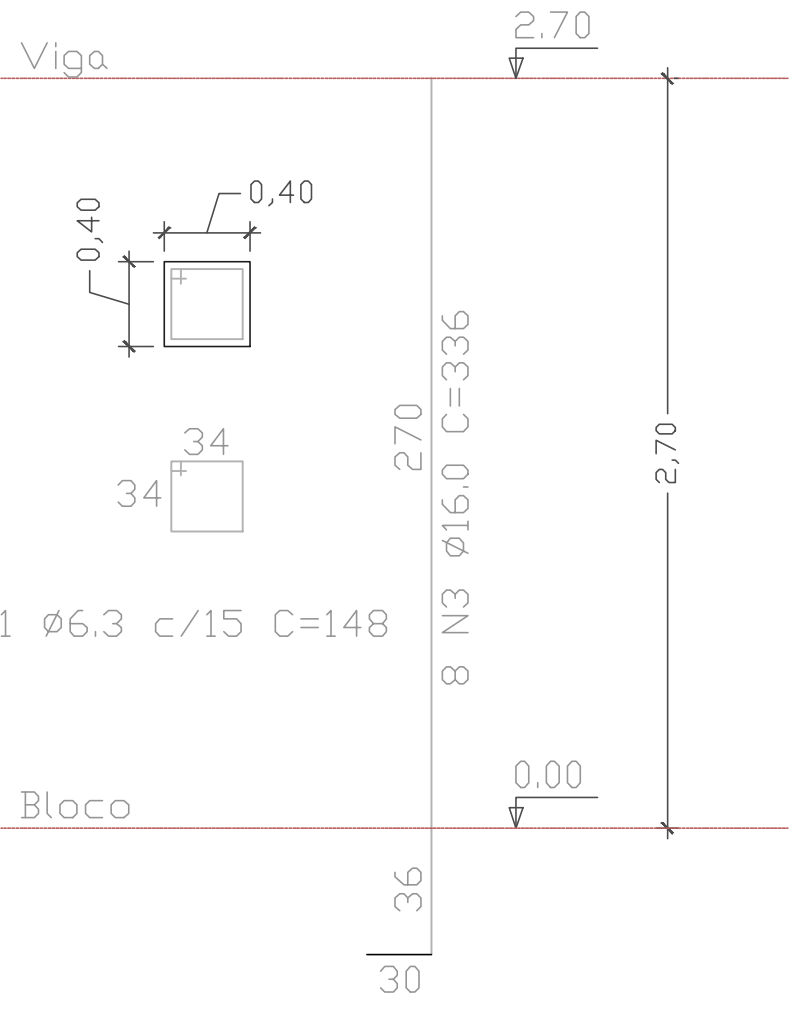
ESCALA ----- 1:50



P3=P4=P5=P6
40x80cm (x4)



P1=P2=P7=P8
40x40cm (x4)

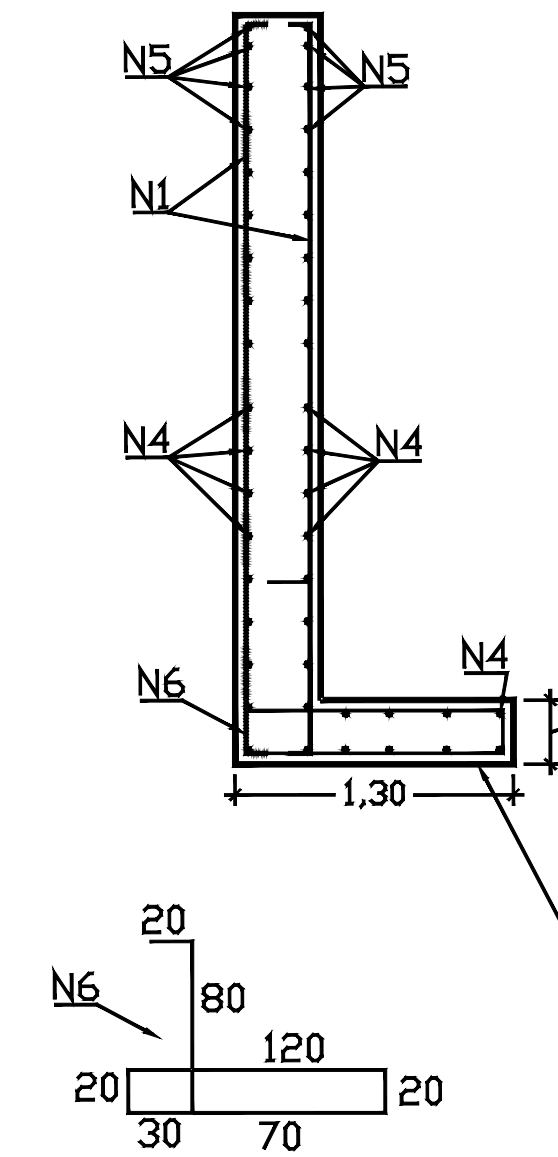


DETALHE CORTINA (x2)

ESCALA ----- 1:50

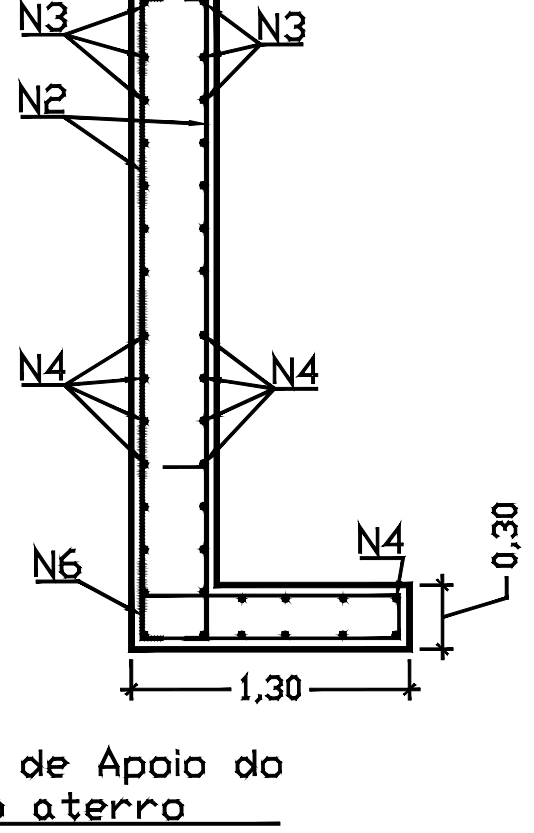
Corte DD

ESCALA ----- 1:50



Corte CC

ESCALA ----- 1:50



ANOTAÇÕES					
PONTE DE CONCRETO					
OBRA: CONSTRUÇÃO DE PONTE DE CONCRETO 8,00 M					
PROPRIETARIO: PREFEITURA MUNICIPAL DE BERNARDO SAYÃO					
LOCAL: ESTRADA VICINAL, ZONA RURAL, BERNARDO SAYÃO - TO					
PROPRIETARIO		PREFEITURA MUNICIPAL DE BERNARDO SAYÃO			
		ENG. CIVIL - LEONARDO SOUSA AMORIM CREA 201512705-S/D-SP			
ESCALA	INDICADA	DATA	FEVEREIRO/2023	CONFERIDO	FOLHA
COMPRIMENTO: 8,00 M LARGURA: 4,00 M ÁREA PONTE: 32,00 M²				CONTEUDO Detalhes Blocos Estacas Pilares Viga Detalhe cortina	A0 - 02
				DESENHO	LEONARDO S. AMORIM (03) 95278-6334