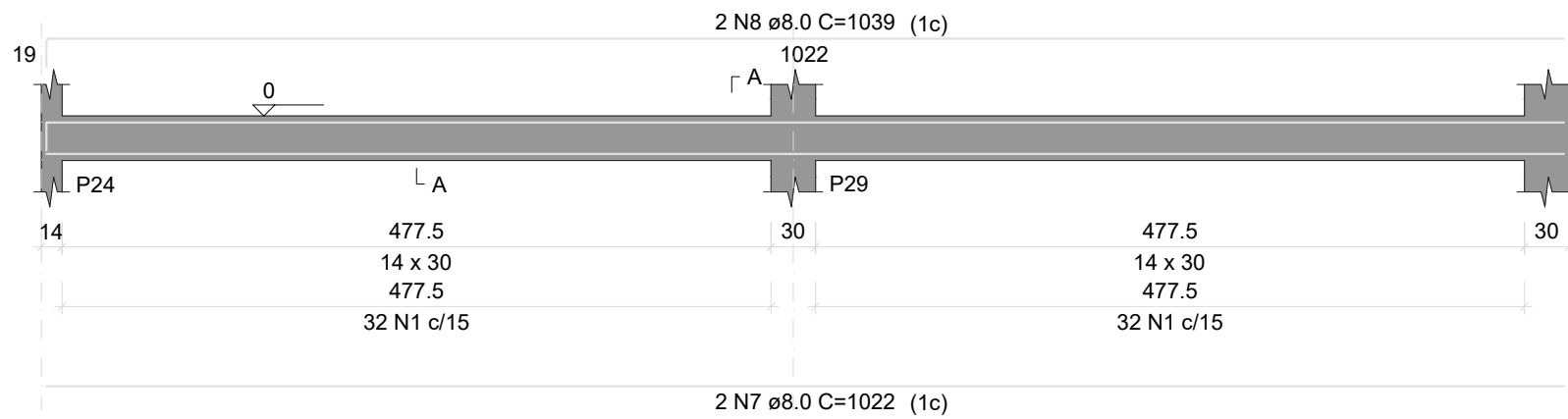


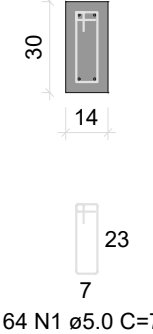
VB19

ESC 1:50



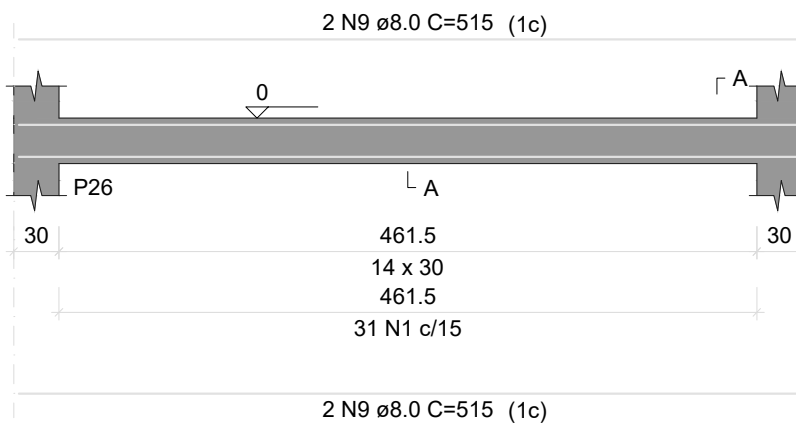
SEÇÃO A-A

ESC 1:25



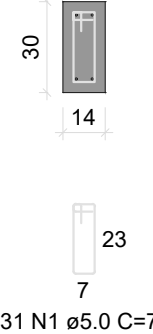
VB20

ESC 1:50



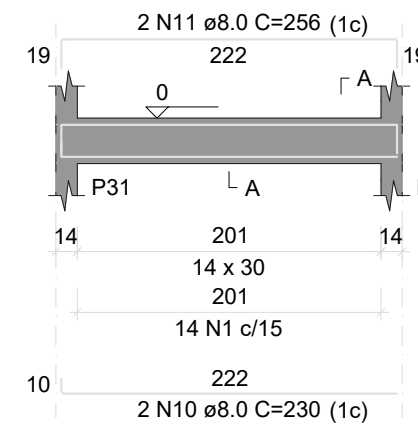
SEÇÃO A-A

ESC 1:25



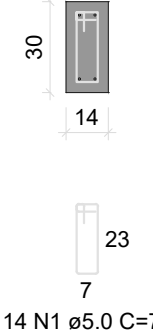
VB23

ESC 1:50



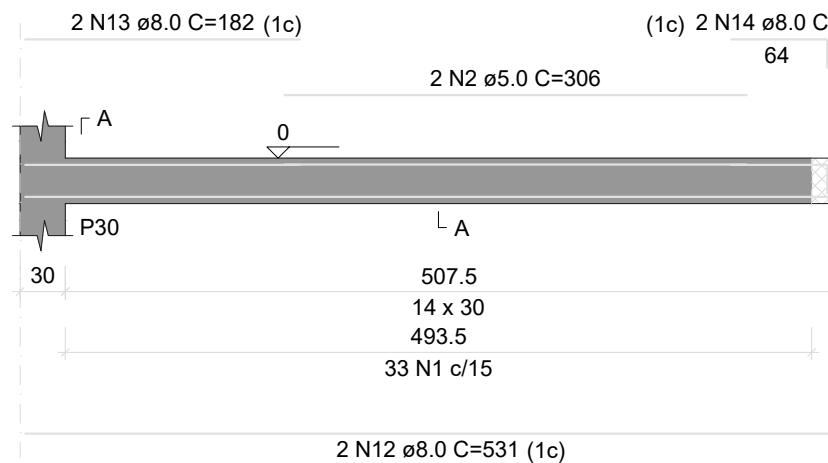
SEÇÃO A-A

ESC 1:25



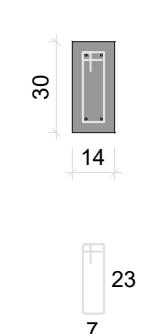
VB24

ESC 1:50



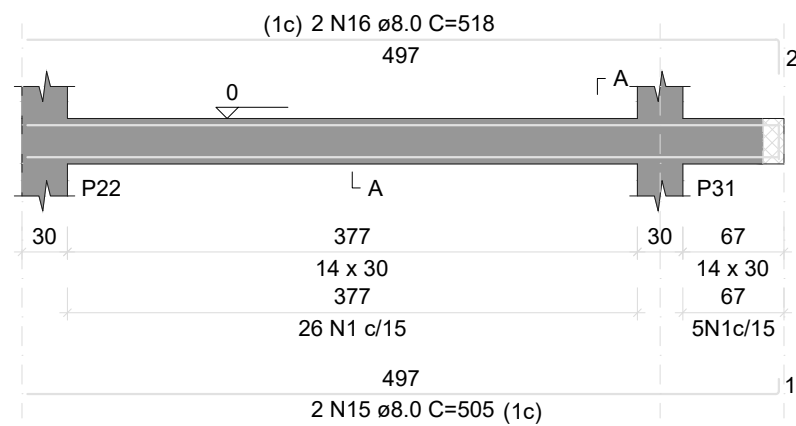
SEÇÃO A-A

ESC 1:25



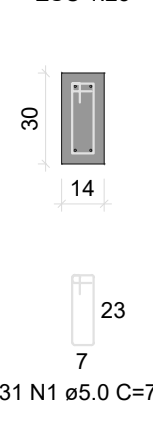
VB25

ESC 1:50



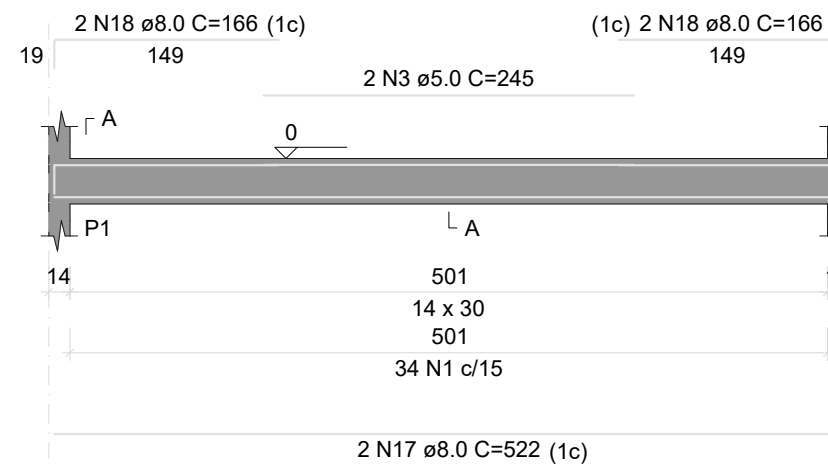
SEÇÃO A-A

ESC 1:25



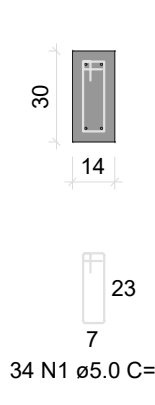
VB26

ESC 1:50



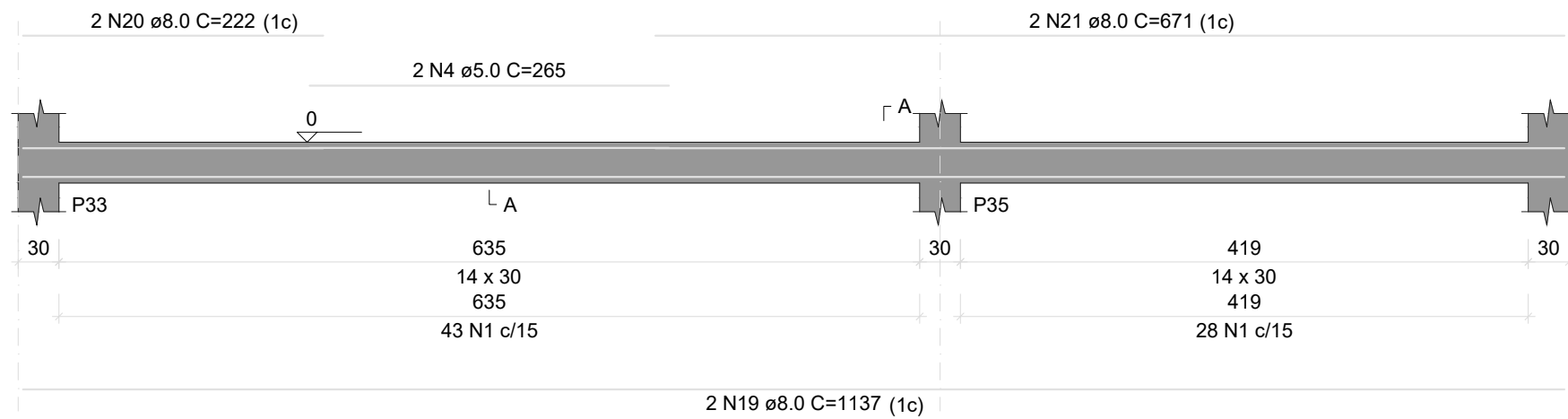
SEÇÃO A-A

ESC 1:25



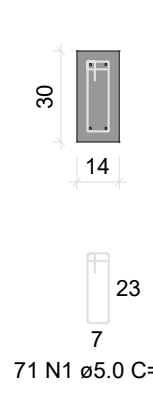
VB27

ESC 1:50



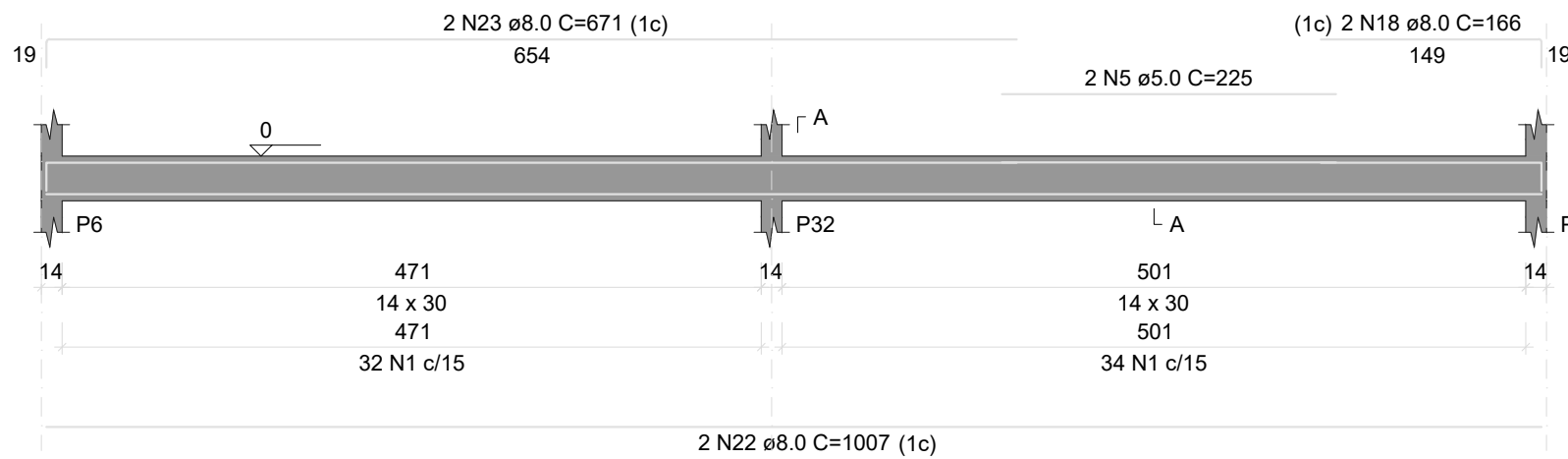
SEÇÃO A-A

ESC 1:25



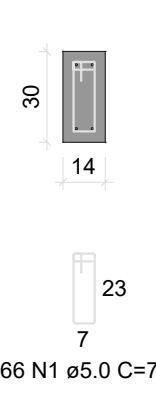
VB28

ESC 1:50



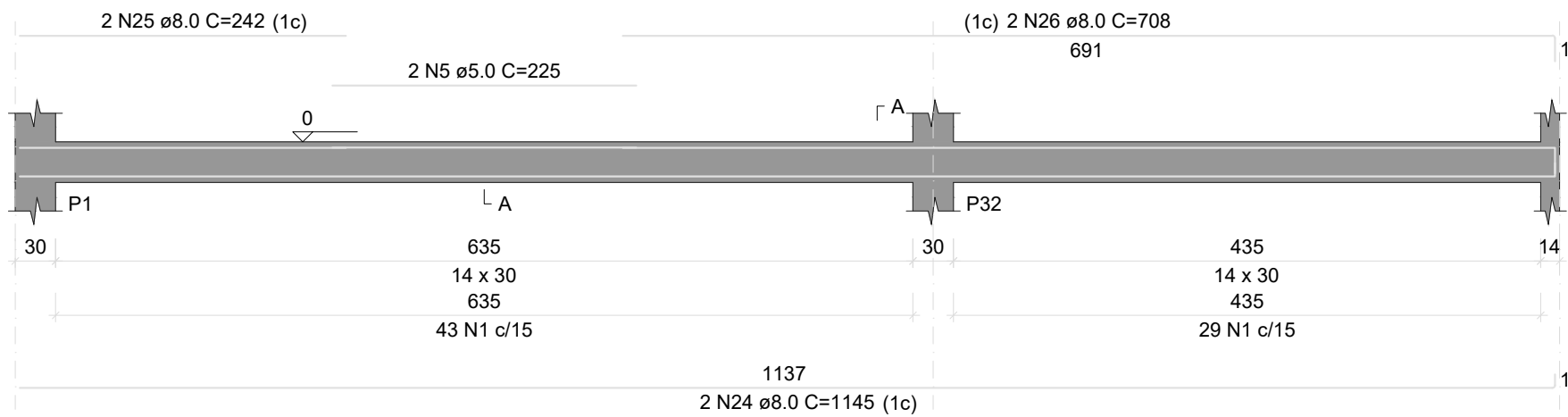
SEÇÃO A-A

ESC 1:25



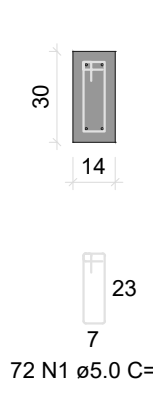
VB29

ESC 1:50



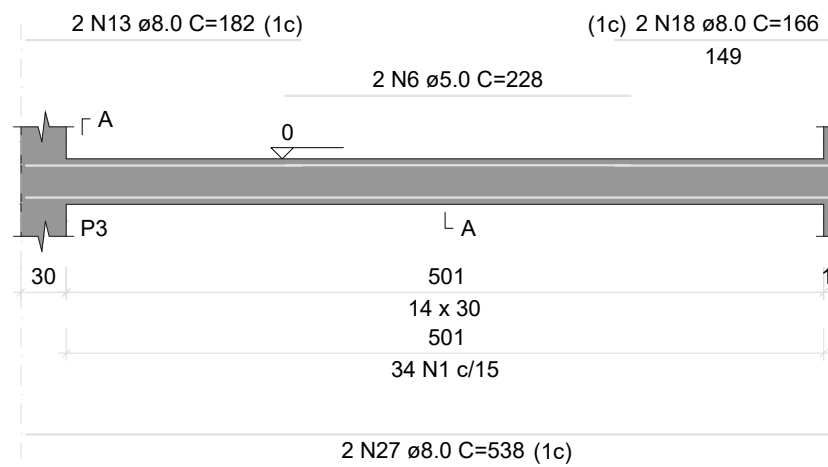
SEÇÃO A-A

ESC 1:25



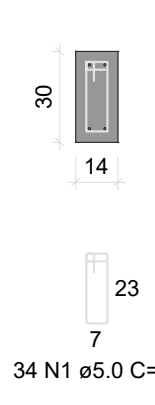
VB30

ESC 1:50

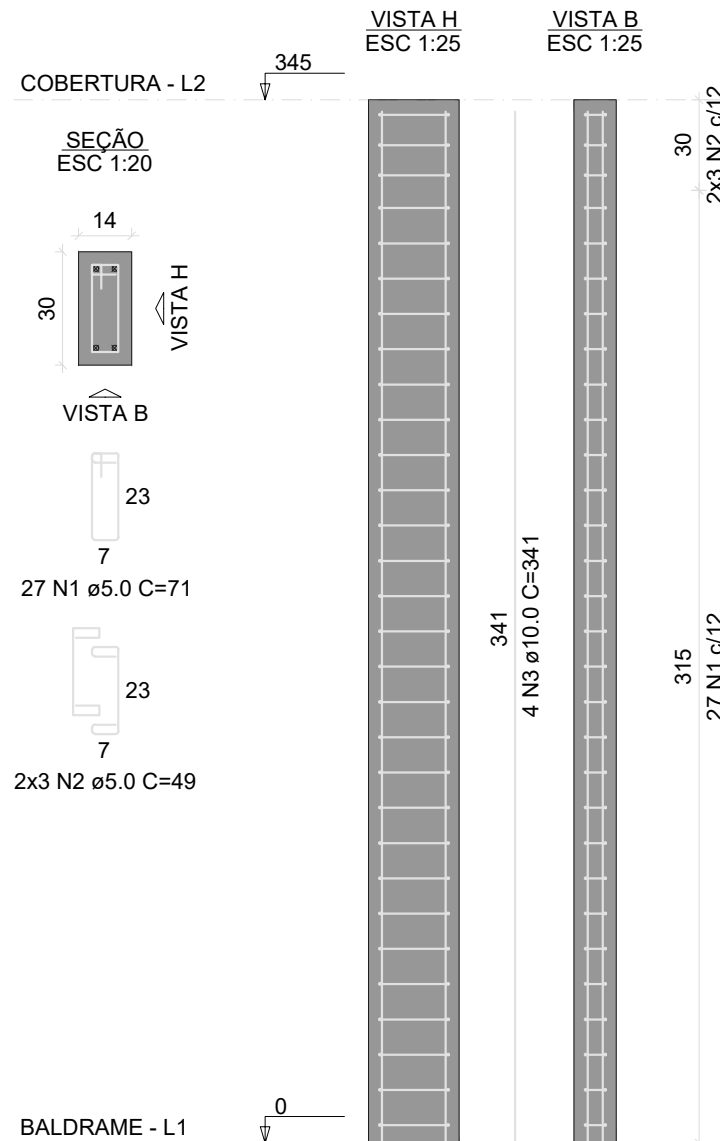


SEÇÃO A-A

ESC 1:25



P1=P3=P4=P5=P6=P7=P8=
=P9=P10=P11=P12=P13=
=P14=P15=P16=P17=P18=
=P19=P20=P21=P22=P24=
=P25=P26=P29=P30=P31=
=P32=P33=P34=P35



| RELAÇÃO DO AÇO | | | | | |
|----------------|---|-----------|-------|-------------|--------------|
| AÇO | N | DIAM (mm) | QUANT | C.UNIT (cm) | C.TOTAL (cm) |
| CA60 | 1 | 5.0 | 837 | 71 | 59427 |
| CA60 | 2 | 5.0 | 186 | 49 | 9114 |
| CA50 | 3 | 10.0 | 124 | 341 | 42284 |

| RESUMO DO AÇO | | | |
|-----------------|-----------|-------------|-----------------|
| AÇO | DIAM (mm) | C.TOTAL (m) | PESO + 10% (kg) |
| CA50 | 10.0 | 422.8 | 286.8 |
| CA60 | 5.0 | 665.4 | 116.2 |
| PESO TOTAL (kg) | | | |
| CA50 | 286.8 | | |
| CA60 | 116.2 | | |

Volume de concreto (C-25) = 4.49 m³
Área de forma = 94.12 m²

| RELAÇÃO DO AÇO | | | | | |
|----------------|----|-----------|-------|-------------|--------------|
| AÇO | N | DIAM (mm) | QUANT | C.UNIT (cm) | C.TOTAL (cm) |
| CA60 | 1 | 5.0 | 450 | 71 | 31950 |
| CA60 | 2 | 5.0 | 2 | 306 | 612 |
| CA60 | 3 | 5.0 | 2 | 245 | 490 |
| CA60 | 4 | 5.0 | 2 | 205 | 530 |
| CA60 | 5 | 5.0 | 4 | 225 | 900 |
| CA60 | 6 | 5.0 | 2 | 228 | 456 |
| CA60 | 7 | 8.0 | 2 | 1022 | 2044 |
| CA60 | 8 | 8.0 | 2 | 1038 | 2078 |
| CA60 | 9 | 8.0 | 4 | 515 | 2060 |
| CA60 | 10 | 8.0 | 2 | 230 | 460 |
| CA60 | 11 | 8.0 | 2 | 256 | 512 |
| CA60 | 12 | 8.0 | 2 | 531 | 1062 |
| CA60 | 13 | 8.0 | 4 | 182 | 728 |
| CA60 | 14 | 8.0 | 2 | 81 | 162 |
| CA60 | 15 | 8.0 | 2 | 505 | 1010 |
| CA60 | 16 | 8.0 | 2 | 518 | 1036 |
| CA60 | 17 | 8.0 | 2 | 522 | 1044 |
| CA60 | 18 | 8.0 | 8 | 166 | 1328 |
| CA60 | 19 | 8.0 | 2 | 1137 | 2274 |
| CA60 | 20 | 8.0 | 2 | 222 | 444 |
| CA60 | 21 | 8.0 | 2 | 671 | 1342 |
| CA60 | 22 | 8.0 | 2 | 1007 | 2014 |
| CA60 | 23 | 8.0 | 2 | 671 | 1342 |
| CA60 | 24 | 8.0 | 2 | 1145 | 2290 |
| CA60 | 25 | 8.0 | 2 | 242 | 484 |
| CA60 | 26 | 8.0 | 2 | 708 | 1416 |
| CA60 | 27 | 8.0 | 2 | 538 | 1076 |

| RESUMO DO AÇO | | | |
|-----------------|-----------|-------------|-----------------|
| AÇO | DIAM (mm) | C.TOTAL (m) | PESO + 10% (kg) |
| CA50 | 8.0 | 262.1 | 113.7 |
| CA60 | 5.0 | 349.4 | 59.2 |
| PESO TOTAL (kg) | | | |
| CA50 | 113.7 | | |
| CA60 | 59.2 | | |

Volume de concreto (C-25) = 2.79 m³
Área de forma = 53.26 m²

PROJETO ESTRUTURAL

OBRA: CONSTRUÇÃO DA SECRETARIA DE EDUCAÇÃO
PROPRIETÁRIO: FUNDO MUNICIPAL DE EDUCAÇÃO DE BERNARDO SAYÃO
LOCAL: RUA ERNESTINO MARCELINO ALVES, CENTRO, BERNARDO SAYÃO - TO

FUNDO MUNICIPAL DE EDUCAÇÃO DE BERNARDO SAYÃO

ENG. CIVIL - LEONARDO SOUSA AMORIM
CREA 26151/2785-5/05-SP

| ESCALA | INDICADA | DATA | JUNHO/2022 | CONFERIDO | CONTEUDO | FOLHA |
|------------------|----------|------|------------|-------------------------------------|----------|--------------------------------------|
| ÁREAS: 408,18 m² | | | | ESTRUTURAL: BALDRAME - 02; PILARES; | | A4 - 06 |
| | | | | DESENHO | | LEONARDO S. AMORIM (R) 99278-6334 |