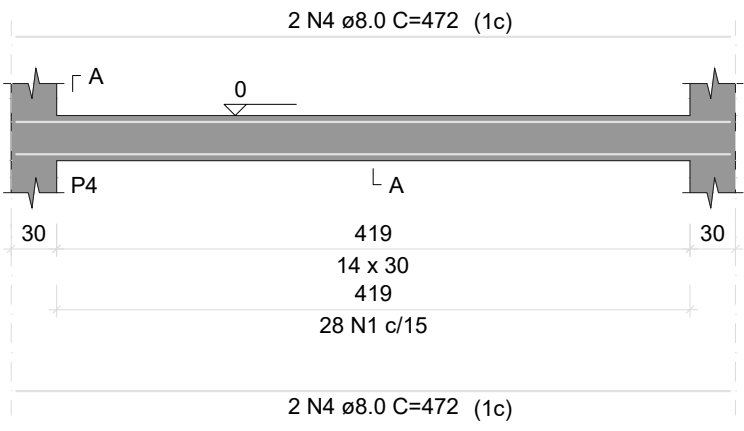


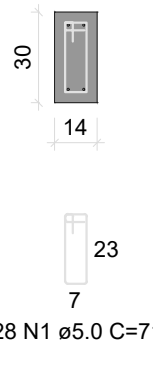
VB2

ESC 1:50



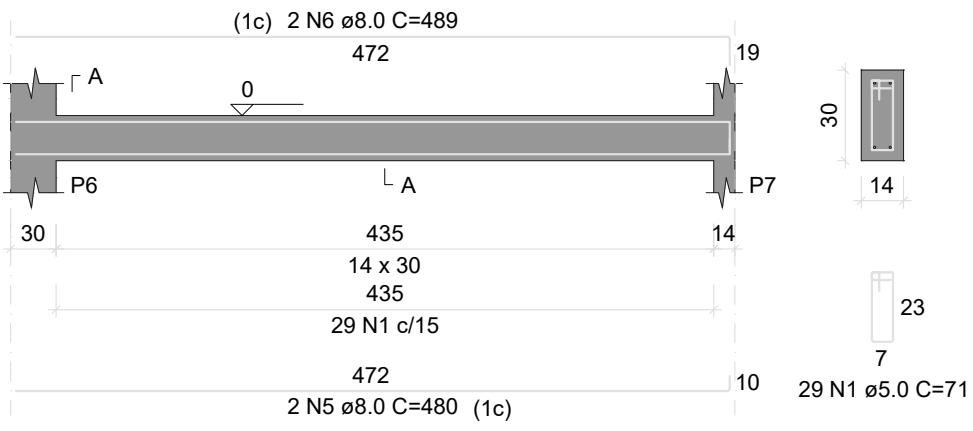
SEÇÃO A-A

ESC 1:25



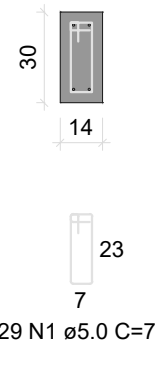
VB3

ESC 1:50



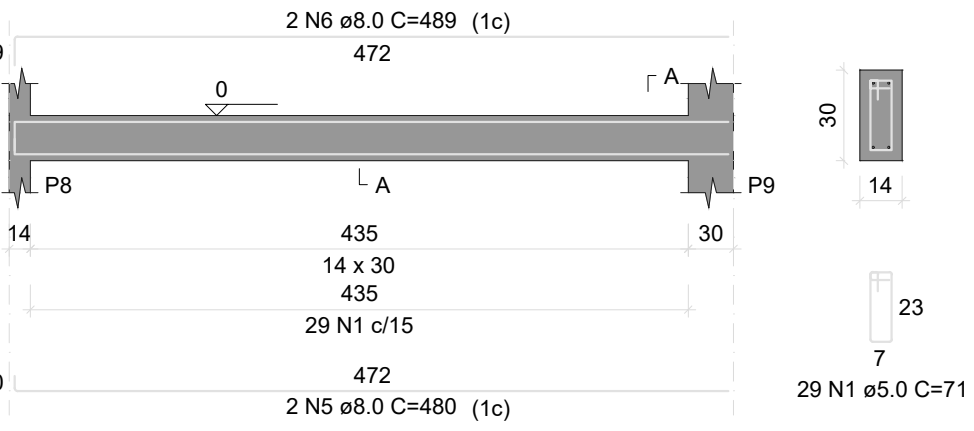
SEÇÃO A-A

ESC 1:25



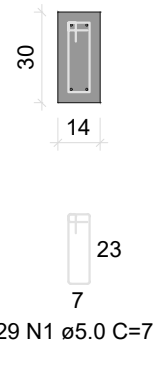
VB4

ESC 1:50



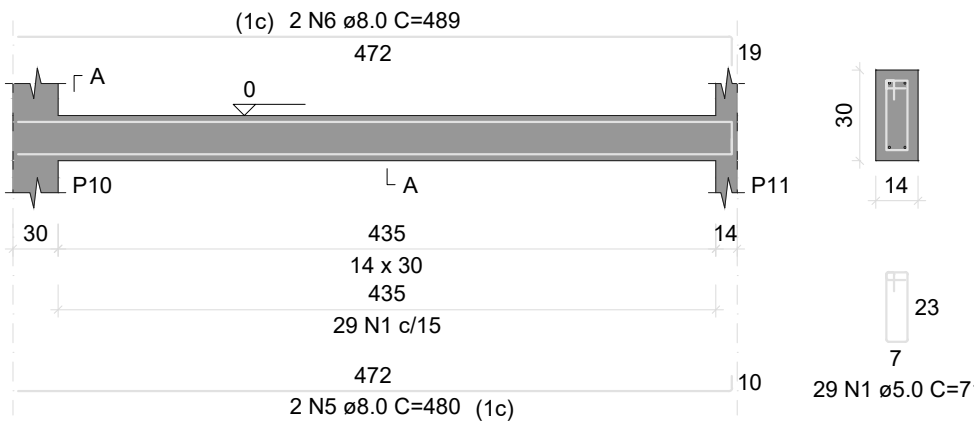
SEÇÃO A-A

ESC 1:25



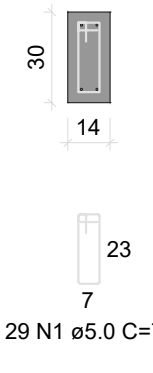
VB5

ESC 1:50



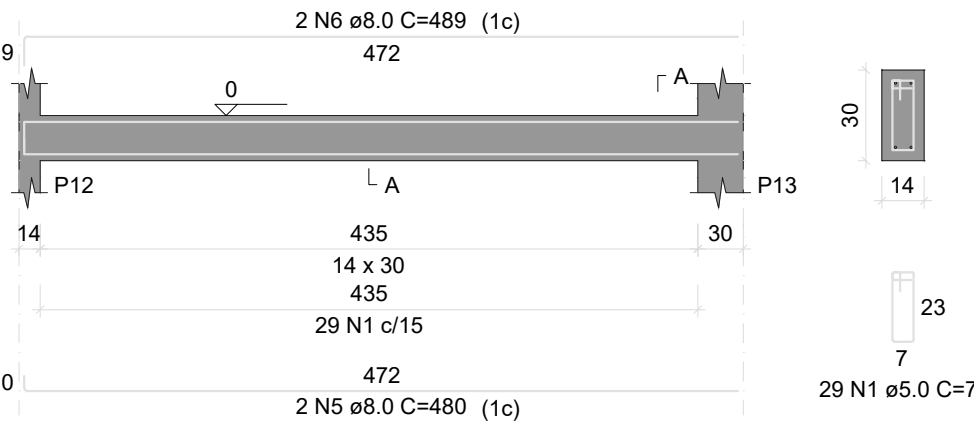
SEÇÃO A-A

ESC 1:25



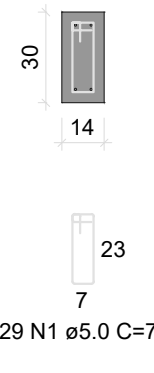
VB6

ESC 1:50



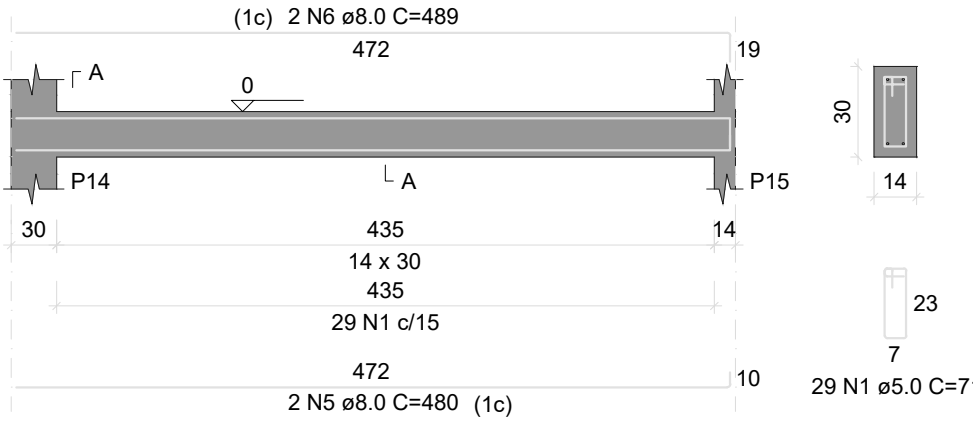
SEÇÃO A-A

ESC 1:25



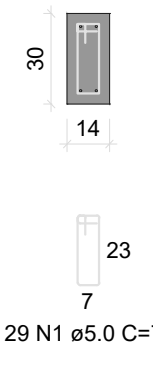
VB7

ESC 1:50



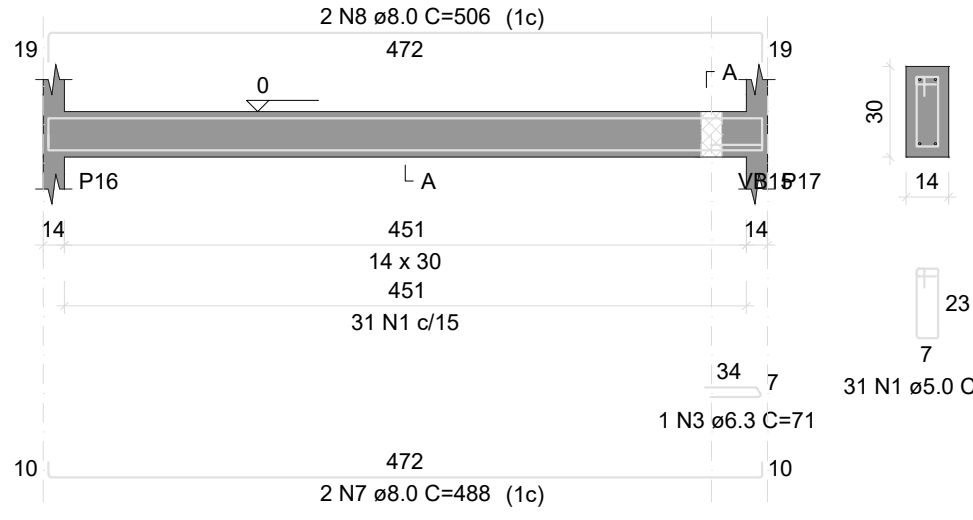
SEÇÃO A-A

ESC 1:25



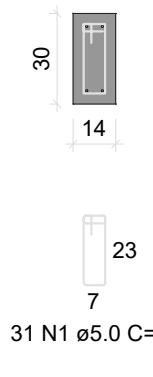
VB8

ESC 1:50



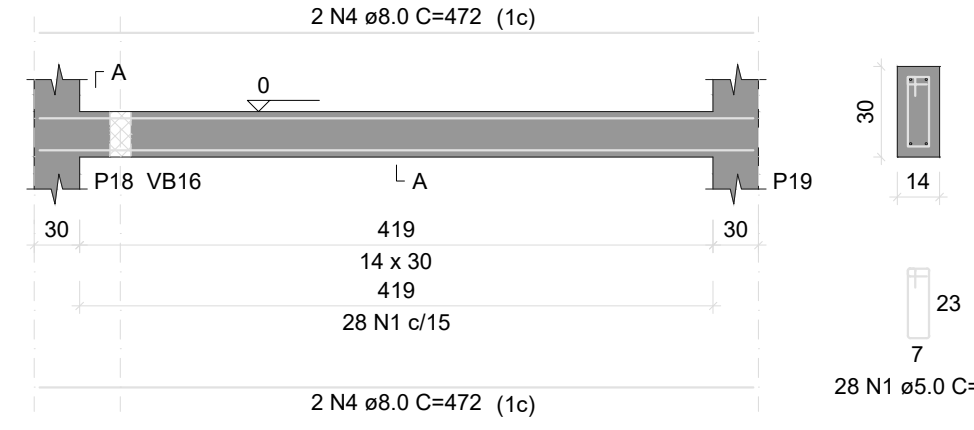
SEÇÃO A-A

ESC 1:25



VB9

ESC 1:50



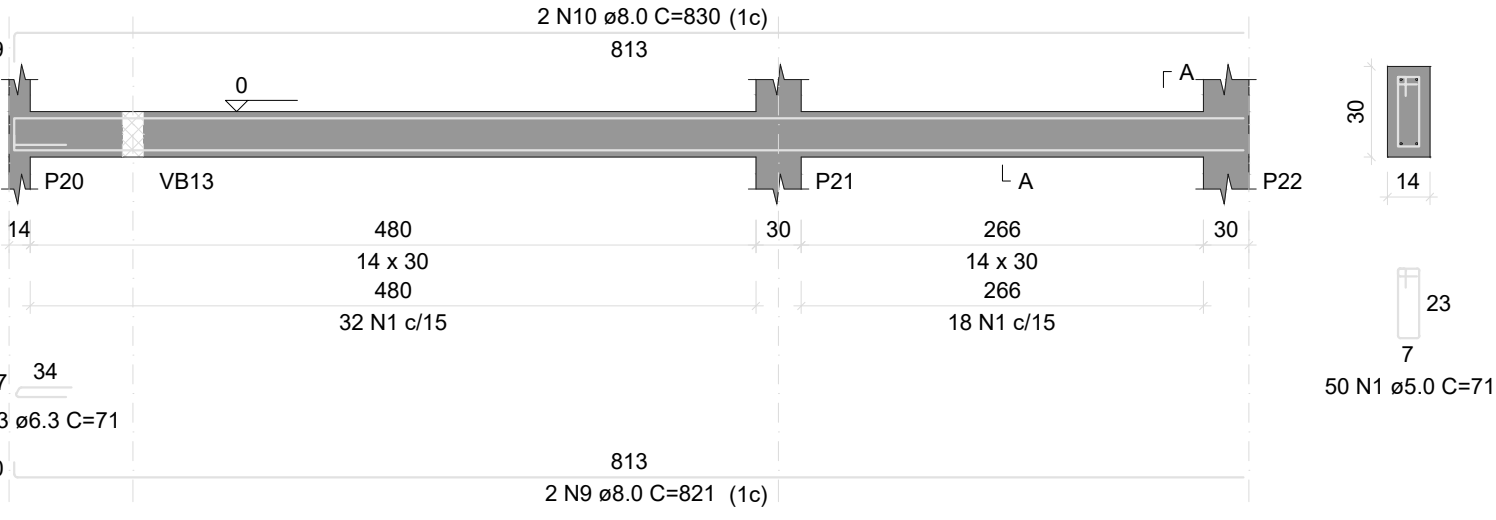
SEÇÃO A-A

ESC 1:25



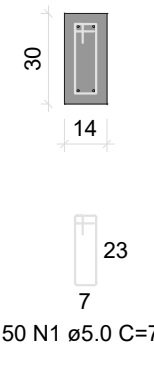
VB10

ESC 1:50



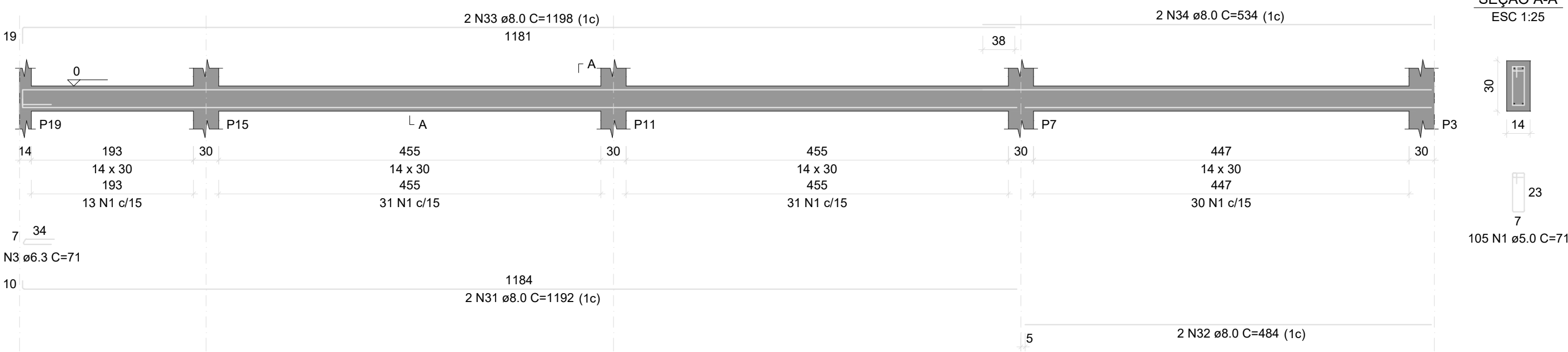
SEÇÃO A-A

ESC 1:25



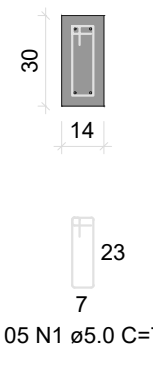
VB18

ESC 1:50



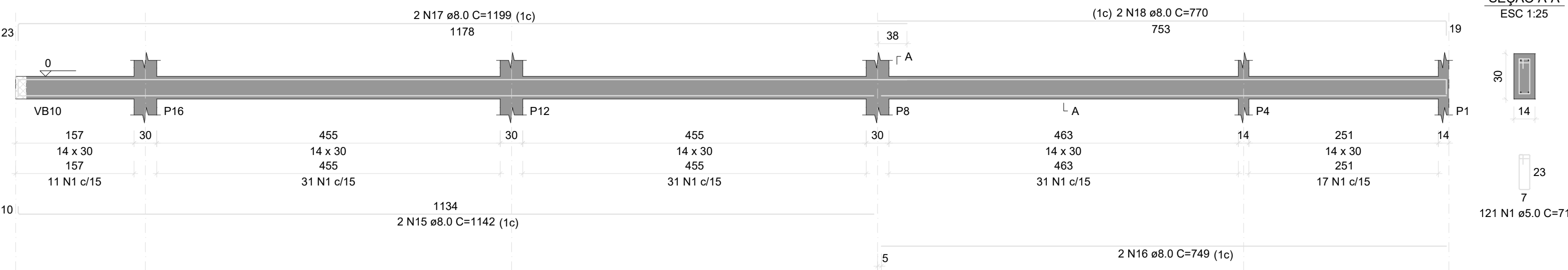
SEÇÃO A-A

ESC 1:25



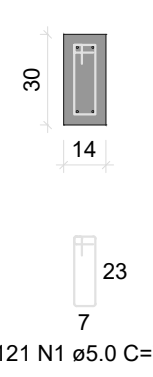
VB13

ESC 1:50



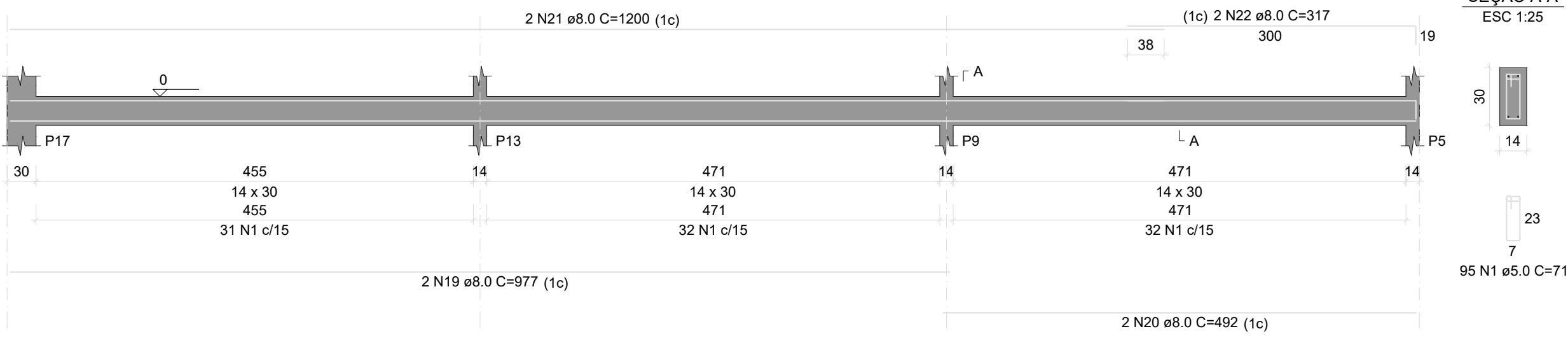
SEÇÃO A-A

ESC 1:25



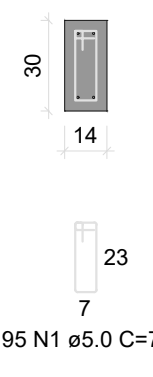
VB14

ESC 1:50



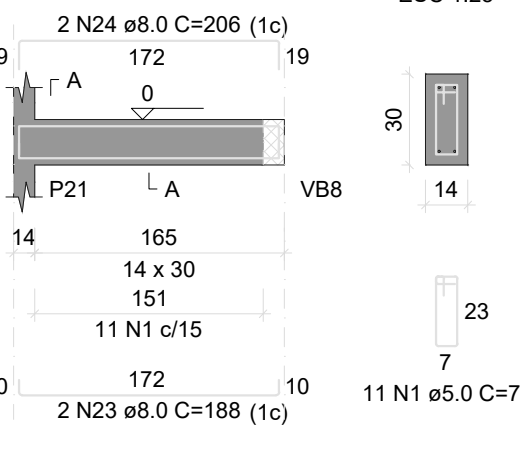
SEÇÃO A-A

ESC 1:25



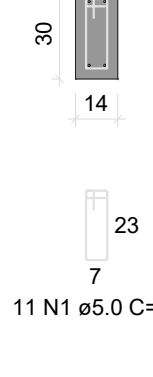
VB15

ESC 1:50



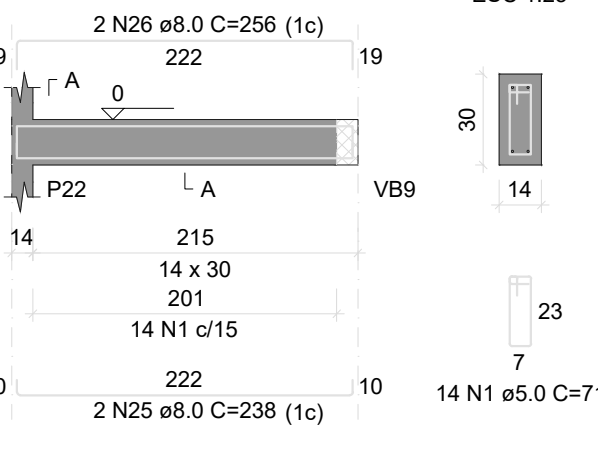
SEÇÃO A-A

ESC 1:25



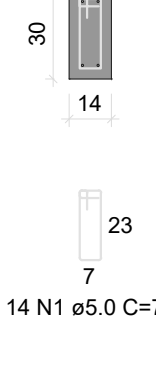
VB16

ESC 1:50



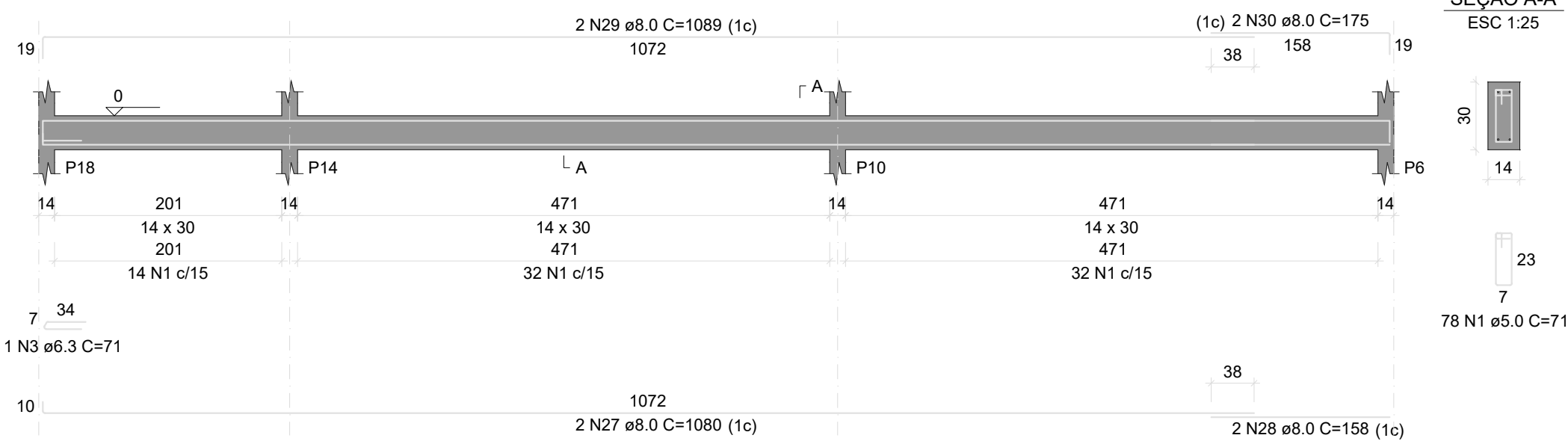
SEÇÃO A-A

ESC 1:25



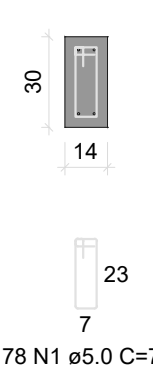
VB17

ESC 1:50



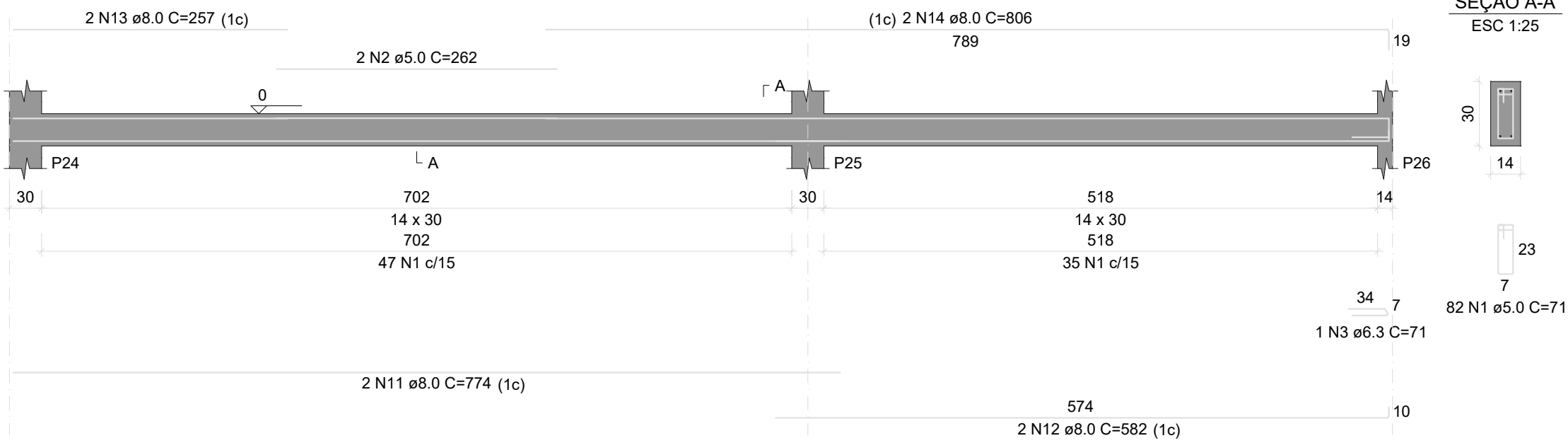
SEÇÃO A-A

ESC 1:25



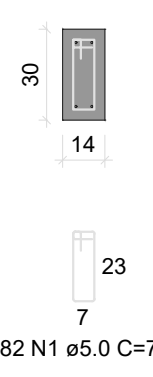
VB11

ESC 1:50



SEÇÃO A-A

ESC 1:25



RELAÇÃO DO AÇO

AÇO	N	DIAM (mm)	QUANT	C.UNIT (cm)	C.TOTAL (cm)
VB2	1	5.0	788	71	55048
VB5	2	5.0	2	262	524
VB8	3	6.3	5	71	355
VB9	4	8.0	8	472	3776
VB11	5	8.0	10	480	4800
VB13	6	8.0	10	489	4890
VB15	7	8.0	2	488	976
VB18	8	8.0	2	506	1012
	9	8.0	2	821	1642
	10	8.0	2	830	1660
	11	8.0	2	774	1548
	12	8.0	2	582	1164
	13	8.0	2	257	514
	14	8.0	2	806	1612
	15	8.0	2	1142	2284
	16	8.0	2	749	1498
	17	8.0	2	1199	2398
	18	8.0	2	770	1540
	19	8.0	2	977	1954
	20	8.0	2	482	964
	21	8.0	2	1200	2400
	22	8.0	2	317	634
	23	8.0	2	198	396
	24	8.0	2	206	412
	25	8.0	2	238	476
	26	8.0	2	256	512
	27	8.0	2	1080	2160
	28	8.0	2	158	316
	29	8.0	2	1089	2178
	30	8.0	2	175	350
	31	8.0	2	1192	2384
	32	8.0	2	484	968
	33	8.0	2	1198	2396
	34	8.0	2	534	1068

RESUMO DO AÇO

AÇO	DIAM (mm)	C.TOTAL (m)	PESO + 10% (kg)
CA50	6.3	3.6	1
CA80	8.0	508.8	220.8
CA50	5.0	564.7	95.7
PESO TOTAL (kg)		221.8	95.7

Volume de concreto (C-25) = 4.89 m³

Área de forma = 93.28 m²

PROJETO ESTRUTURAL

OBRA: CONSTRUÇÃO DA SECRETARIA DE EDUCAÇÃO
PROPRIETÁRIO: FUNDO MUNICIPAL DE EDUCAÇÃO DE BERNARDO SAYÃO
LOCAL: RUA ERNESTINO MARCELINO ALVES, CENTRO, BERNARDO SAYÃO - TO



FUNDO MUNICIPAL DE EDUCAÇÃO DE BERNARDO SAYÃO

ENG. CIVIL - LEONARDO SOUSA AMORIM

CREA 26151/2705-5/05-SP

LSA
ENGENHARIA

ESCALA INDICADA

DATA

JUNHO/2022

CONFERIDO

ÁREAS: 408,18 m²

CONTEUDO ESTRUTURAL: BALDRAME - 01

FOLHA

A4 - 05

DESENHO

LEONARDO S. AMORIM

(R) 99276-6334