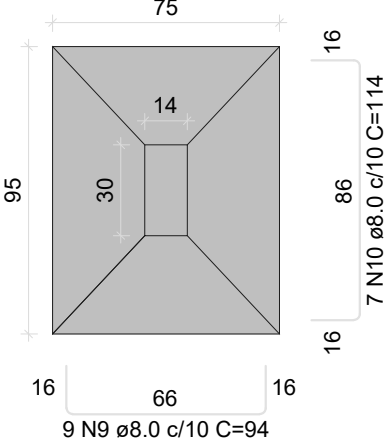
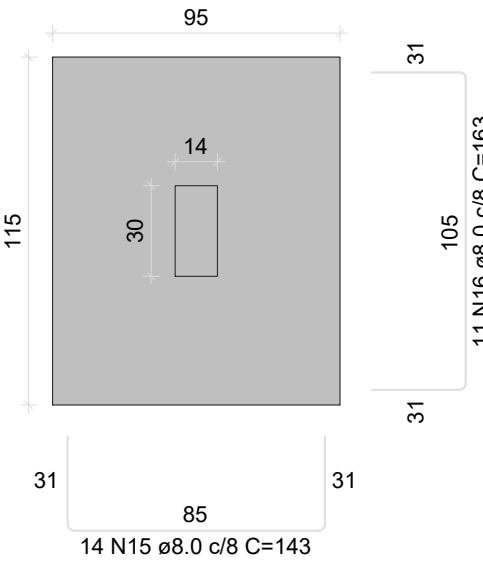


S22=S32  
PLANTA  
ESC 1:25



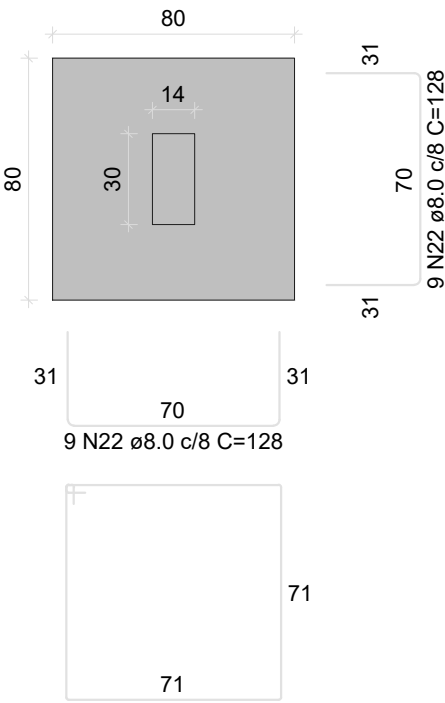
Solo com capacidade de suporte > 2.50 kgf/cm²  
Solo compactado sobre a sapata  
peso específico > 1600.00 kgf/m³

S25  
PLANTA  
ESC 1:25



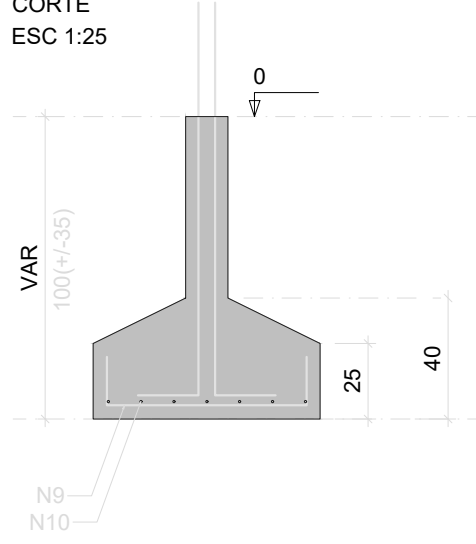
Solo com capacidade de suporte > 2.50 kgf/cm²  
Solo compactado sobre a sapata  
peso específico > 1600.00 kgf/m³

S29  
PLANTA  
ESC 1:25



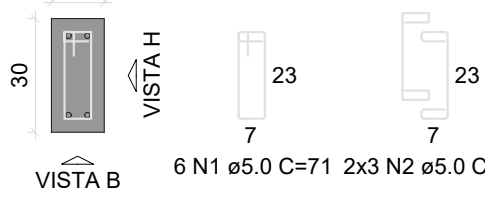
Solo com capacidade de suporte > 2.50 kgf/cm²  
Solo compactado sobre a sapata  
peso específico > 1600.00 kgf/m³

CORTE  
ESC 1:25

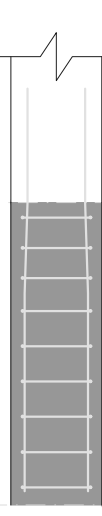


P22=P32

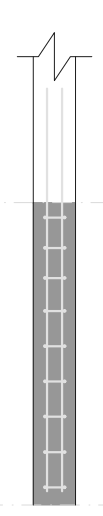
BALDRAME - L1  
SEÇÃO  
ESC 1:20



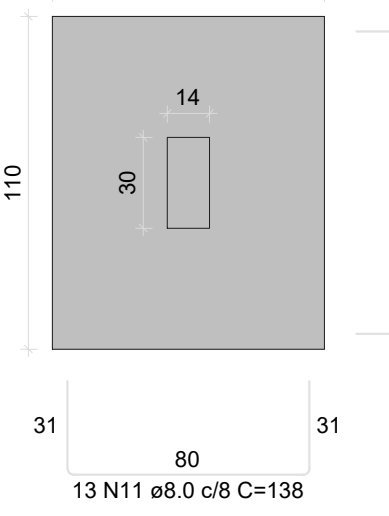
VISTA H  
ESC 1:25



VISTA B  
ESC 1:25

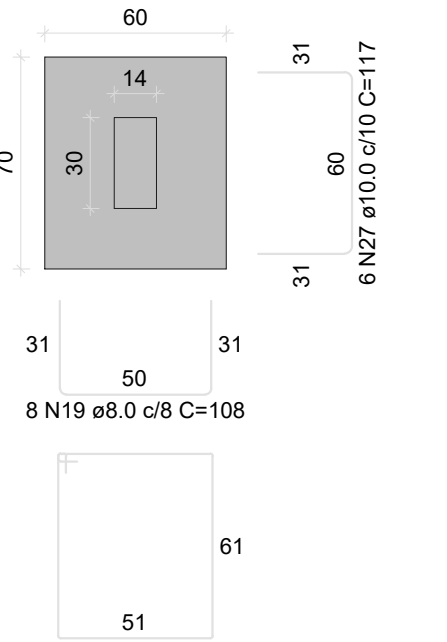


S24  
PLANTA  
ESC 1:25



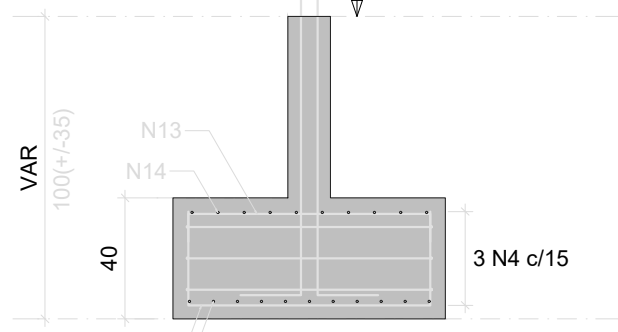
Solo com capacidade de suporte > 2.50 kgf/cm²  
Solo compactado sobre a sapata  
peso específico > 1600.00 kgf/m³

S26  
PLANTA  
ESC 1:25



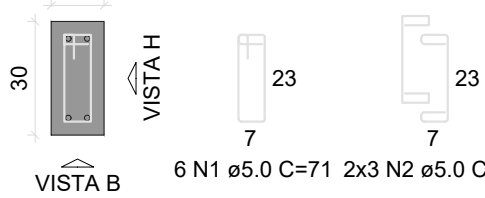
Solo com capacidade de suporte > 2.50 kgf/cm²  
Solo compactado sobre a sapata  
peso específico > 1600.00 kgf/m³

CORTE  
ESC 1:25

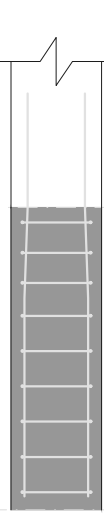


P24

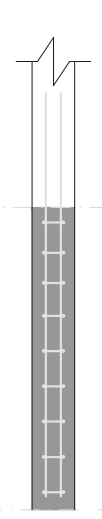
BALDRAME - L1  
SEÇÃO  
ESC 1:20



VISTA H  
ESC 1:25



VISTA B  
ESC 1:25

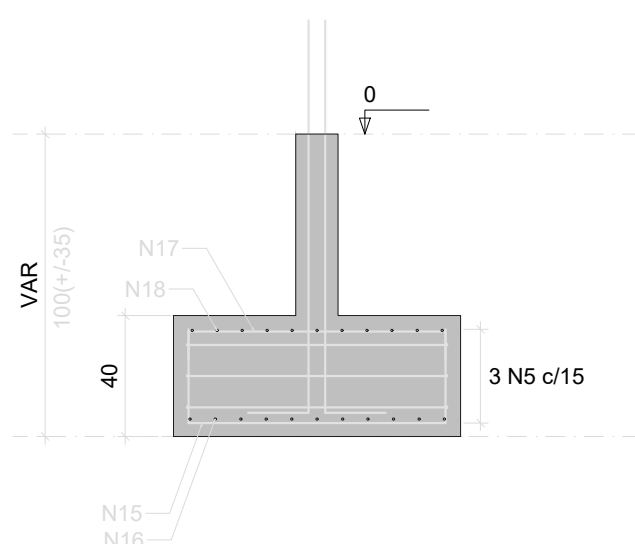


RELAÇÃO DO AÇO					
AÇO	N	DIAM (mm)	QUANT	C UNIT (cm)	C TOTAL (cm)
CA60	1	5.0	42	71	2982
	2	5.0	42	49	2058
	3	5.0	8	22	198
	4	5.0	3	375	1125
	5	5.0	3	395	1185
CA50	6	5.0	3	235	705
	7	5.0	3	295	885
	8	5.0	3	295	885
	9	8.0	18	94	1692
	10	8.0	14	114	1596
	11	8.0	21	138	2898
	12	8.0	11	158	1738
	13	8.0	21	94	1974
	14	8.0	10	114	1140
	15	8.0	14	143	2002
	16	8.0	11	163	1793
	17	8.0	14	99	1386
	18	8.0	11	119	1309
	19	8.0	8	108	864
	20	8.0	8	64	512
CA50 CA60	21	8.0	17	74	1258
	22	8.0	18	128	2304
	23	8.0	18	84	1512
	24	8.0	11	118	1298
	25	10.0	28	152	4256
	26	10.0	2	110	220
	27	10.0	6	117	702

RESUMO DO AÇO			
AÇO	DIAM (mm)	C TOTAL (m)	PESO + 10% (kg)
CA50	8.0	252.8	109.7
CA60	10.0	51.8	35.1
PESO TOTAL (kg)			17
CA50	144.8		
CA60	17		

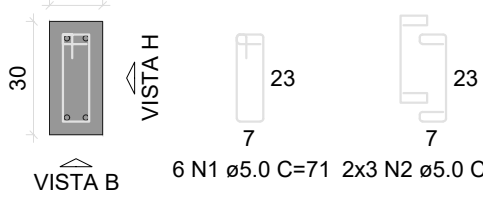
Volume de concreto (C-25) = 2.13 m³  
Área de forma = 14.74 m²

CORTE  
ESC 1:25

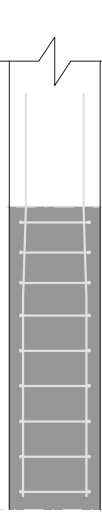


P25

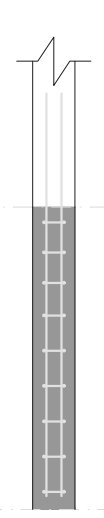
BALDRAME - L1  
SEÇÃO  
ESC 1:20



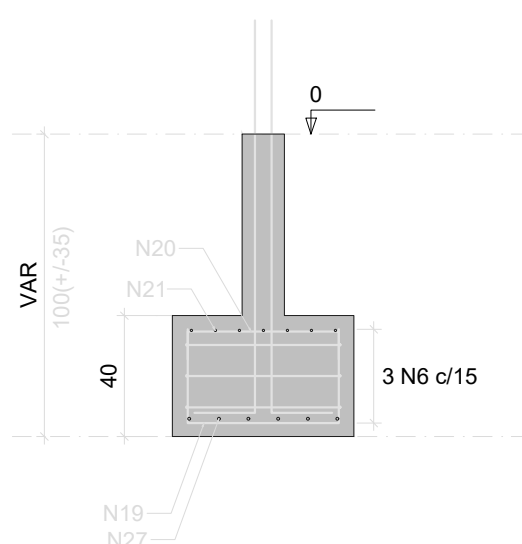
VISTA H  
ESC 1:25



VISTA B  
ESC 1:25

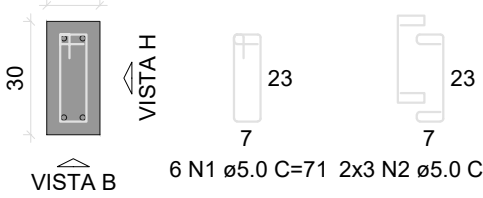


CORTE  
ESC 1:25

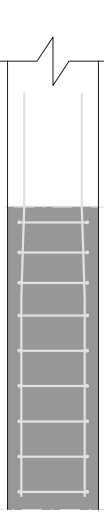


P26

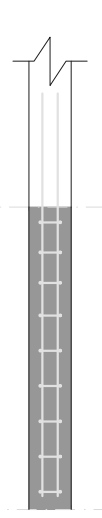
BALDRAME - L1  
SEÇÃO  
ESC 1:20



VISTA H  
ESC 1:25

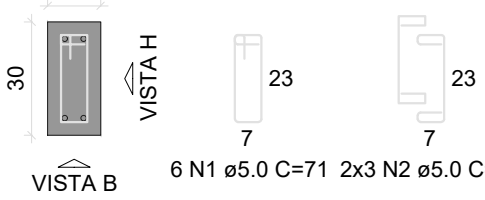


VISTA B  
ESC 1:25

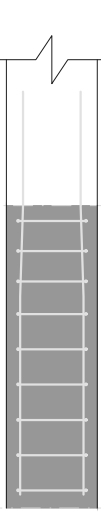


P35

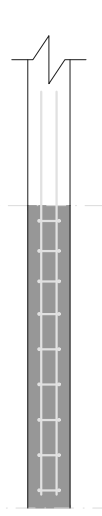
BALDRAME - L1  
SEÇÃO  
ESC 1:20



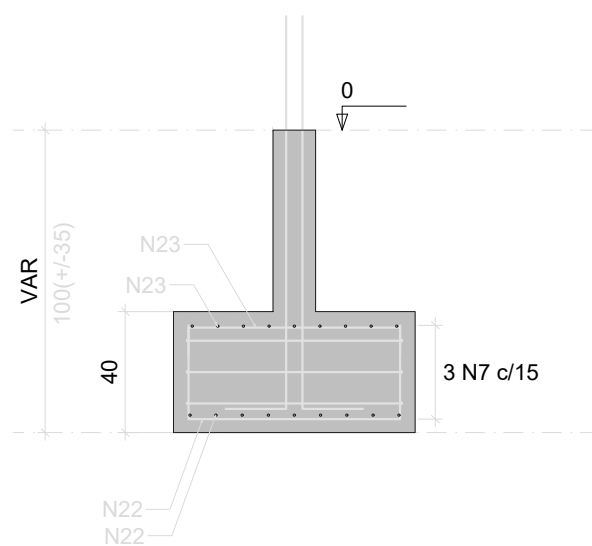
VISTA H  
ESC 1:25



VISTA B  
ESC 1:25



CORTE  
ESC 1:25

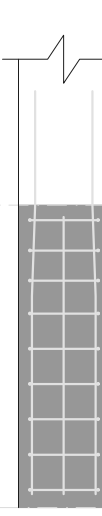


P29

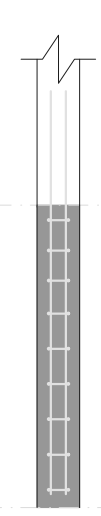
BALDRAME - L1  
SEÇÃO  
ESC 1:20



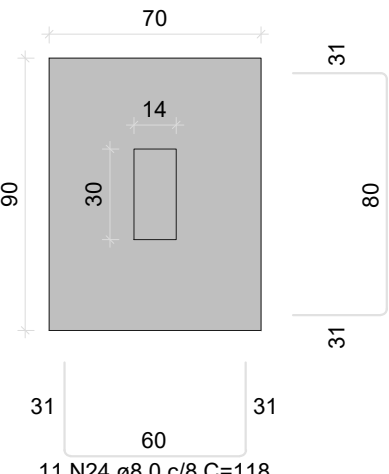
VISTA H  
ESC 1:25



VISTA B  
ESC 1:25

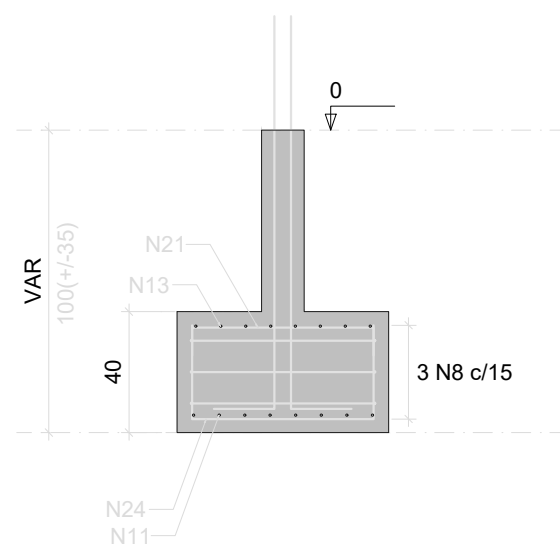


S35  
PLANTA  
ESC 1:25



Solo com capacidade de suporte > 2.50 kgf/cm²  
Solo compactado sobre a sapata  
peso específico > 1600.00 kgf/m³

CORTE  
ESC 1:25



## PROJETO ESTRUTURAL

OBRA: CONSTRUÇÃO DA SECRETARIA DE EDUCAÇÃO  
PROPRIETÁRIO: FUNDO MUNICIPAL DE EDUCAÇÃO DE BERNARDO SAYÃO  
LOCAL: RUA ERNESTINO MARCELINO ALVES, CENTRO, BERNARDO SAYÃO - TO



FUNDO MUNICIPAL DE EDUCAÇÃO DE BERNARDO SAYÃO

ENG. CIVIL - LEONARDO SOUSA AMORIM  
CREA 26151/2018-5/05-SP

**LSA**  
ENGENHARIA

ESCALA INDICADA DATA JUNHO/2022

ÁREAS: 408,18 m²

CONTEUDO  
ESTRUTURAL: FUNDAÇÃO - 02

FOLHA  
A4 - 04

DESENHO  
LEONARDO S. AMORIM  
(R) 99278-6334